

Rotary Adapter for Tapered Glass



Nathan Allen

VIEW IN BROWSER

updated 6. 2. 2024 | published 6. 2. 2024

Summary

A set of wedges and Adapters for tapered glasses for laser etching

[Hobby & Makers](#) > [Mechanical Parts](#)

Tags: [adapter](#) [glass](#) [rotary](#) [laserengraver](#)

An adapter to make laser etching tapered glasses easier. A combination of an adapter for the glasses and a set of wedges to elevate the rotary to set the glass level with the laser.

One set is for 90mm diameter glasses. These are 15 oz White Wine glasses. The second set is for 95mm diameter stemless wine glasses. These fit both stemless and stemmed glasses. Typically 20 oz Red Wine glasses. To use the base for the stemless glasses I used a piece of 2 sided tape to adhere it to the glass.

The 90mm “adapter” is sized for an Old Fashion glass, but it needs a simple spacer of blue painters tape to fit it to a glass. (these are the glasses I used) https://www.amazon.com/Fashioned-Whiskey-Glasses-Bourbon-Cocktail/dp/B0BKGGXGN4/ref=sr_1_1_sspa?crid=2SFD92GNRA96T&keywords=old%2Bfashioned%2Bglass&qid=1706473500&spons&sp_csd=d2lkZ2V0TmFtZT1zcF9hdGY&th=1)).

To etch these glasses I used simple Tempura black paint and a 300 DPI setting in Lightburn.

Most Old Fashion glasses are similar in size and not tight as far as dimensions goes. For variations I have included the Fusion 360 file. The white wine glasses were the same size as Old Fashion glasses. The bigger Red wine glasses needed the larger adapters.

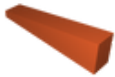
Model files



top-disk.stl



base.stl



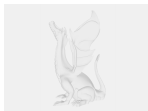
wedge.stl



95mm-top-cap.stl



95mm-base.stl



top-disk-v4.f3d

License ©

This work is licensed under a
GNU



General Public License v2.0

- ✗ | Sharing without ATTRIBUTION
- ✓ | Remix Culture allowed
- ✓ | Commercial Use
- ✓ | Meets Open Definition
- i | Share under the same license