

3D MODEL ONLY



## Starlink antenna adapter for Dish mexico antenna pole



alonso santoyo

[VIEW IN BROWSER](#)

updated 28. 1. 2024 | published 28. 1. 2024

### Summary

Made so you can fit your regular starlink into a Dish Mexico Satellite pole.

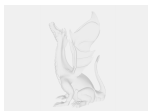
[Hobby & Makers](#) > [Mechanical Parts](#)

Tags: [adapter](#) [tesla](#) [satellite](#) [starlink](#)

Made so you can fit your regular starlink into a Dish Mexico Satellite pole.

45MM inside pole diameter

### Model files



dish-mexico-adaptador-starlink-version-final.step



dish-mexico-adaptador-starlink-version-final.stl

# License

This work is licensed under a  
**Creative Commons (4.0 International License)**



## **Attribution-NonCommercial**

---

- ✗ | Sharing without ATTRIBUTION
- ✓ | Remix Culture allowed
- ✗ | Commercial Use
- ✗ | Free Cultural Works
- ✗ | Meets Open Definition