



Skinny TUSH++



Steven La

[VIEW IN BROWSER](#)

updated 28. 1. 2024 | published 28. 1. 2024

Summary

A reinforced TUSH++ (The Ultimate Spool Holder) with thinner walls for 608 bearings.

[3D Printers](#) > [Accessories](#)

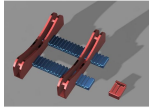
Tags: [spool](#) [filament](#) [spoolholder](#) [tush](#) [bambu](#)

- The original 3mm walls of the TUSH (The Ultimate Spool Holder) were way too thick to fit inside of the [generic cereal boxes](#) I had while using a 68mm wide Bambu spool.
- The walls in this remix are 1.4mm, with added reinforcement along the bottom to keep it strong despite the thin walls.
- It's compatible with [TUSH++ rails](#). Since the walls are thinner, it wobbles a little bit on the rails. If this is a problem, the wedges can be used for extra support.

Instructions

- All items can be printed without supports.
- I used a 0.4mm nozzle with 0.2mm layer height on a Bambu P1S.
- Assemble using 4x [608 ball bearings](#) that snap into the pegs.
- The .f3d file is included if you need to change the thickness or if the bearing pegs need to be modified for your printer.

This remix is based on



TUSH++

by cdeerinck



TUSH - The Ultimate Spool Holder

by filamentry

Model files



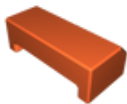
skinny-tush.f3d



skinny-tush.stl



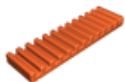
skinny-tush.step



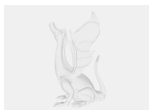
wedge.stl



wedge.step



68mm-rail.stl



68mm-rail.step

License

This work is licensed under a
Creative Commons (4.0 International License)



Attribution-NonCommercial

- ✗ | Sharing without ATTRIBUTION
- ✓ | Remix Culture allowed
- ✗ | Commercial Use
- ✗ | Free Cultural Works
- ✗ | Meets Open Definition