

## U-scribe jig Uchwyt do trasowania blendy/maskownic



Marcel

[VIEW IN BROWSER](#)

updated 4. 2. 2024 | published 4. 2. 2024

### Summary

Uchwyt ułatwia docięcie blendy/maskownicy (krzywe ściany)



1.31 hrs



3 pcs



0.20 mm



0.40 mm



PLA



13 g



Prusa  
MK3/S/S+

[Hobby & Makers](#) > [Tools](#)

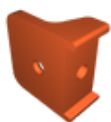
Tags: [furniture](#) [woodwork](#) [workshop](#) [woodworking](#) [tools](#)  
[woodtools](#) [furnituretools](#)

Uchwyt ułatwiający docięcie blendy/maskownicy (krzywe ścienne)

### Model files



podstawa-18.stl



**docisk-18.stl**



**nakretka-18.stl**

## Print files



**docisk\_04n\_02mm\_pla\_mk3s\_20m.gcode**

PLA 0.40 mm 0.20 mm 0.33 hrs 3 g Prusa MK3/S/S+



**podstawa-18\_04n\_02mm\_pla\_mk3s\_41m.gcode**

PLA 0.40 mm 0.20 mm 0.69 hrs 8 g Prusa MK3/S/S+



**nakretka\_04n\_02mm\_pla\_mk3s\_17m.gcode**

PLA 0.40 mm 0.20 mm 0.29 hrs 2 g Prusa MK3/S/S+

## License

This work is licensed under a  
**Creative Commons (4.0 International License)**



### Attribution

- ✗ | Sharing without ATTRIBUTION
- ✓ | Remix Culture allowed
- ✓ | Commercial Use
- ✓ | Free Cultural Works
- ✓ | Meets Open Definition

