



## Rotatable Dust Shroud for M18 Compact Router

 npopson

[VIEW IN BROWSER](#)

updated 29. 1. 2024 | published 29. 1. 2024

### Summary

This dust shroud dramatically improves dust collection when doing edge work.

[Hobby & Makers](#) > [Tools](#)

Tags: [tool](#) [collector](#) [router](#) [tools](#) [vacuum](#) [dust](#) [compact](#) [collection](#) [shroud](#) [milwaukee](#) [hood](#) [sawdust](#) [m18](#)

Only 2 parts to print.

This model is only designed to fit the M18 Compact Router. It will not fit other router models. Remix for other routers as required.

Significantly improves dust collection when doing edge work (flush trimming, round-overs, chamfers, etc).

Print the parts in the orientation provided.

- 4 walls, 5 top layers, 5 bottom layers, 20% infill (minimums).
- **Brim** for both the shroud and baseplate for bed adhesion and warping.

- **Supports** for the baseplate, for the screw holes (the holes are flat on the inside to match the OEM baseplate, so there is an unsupported overhang).

## Model files



### STLs

5 files



#### **baseplate-normal-required.stl**

☐ Only for M18 Compact Router. Same size as original baseplate. 101 mm (4") OD.



#### **shroud-normal-required.stl**

☐ This shroud will work with most bits.



#### **baseplate-large.stl**

☐ Only for M18 Compact Router. Same size as original large baseplate. 146 mm (5.75") OD.



#### **shroud-short.stl**

☐ This shroud will work with shorter bits like round-over bits.



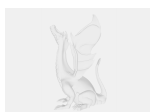
#### **shroud-tall.stl**

☐ This shroud will work with most bits including taller bits.



### STEP F3D Models

2 files



#### **m18-compact-router-dust-shroud.step**



m18-compact-router-dust-shroud.f3d

## License

This work is licensed under a  
**Creative Commons (4.0 International License)**



**Attribution—Noncommercial—Share Alike**

- 
- ✗ | Sharing without ATTRIBUTION
  - ✓ | Remix Culture allowed
  - ✗ | Commercial Use
  - ✗ | Free Cultural Works
  - ✗ | Meets Open Definition