



# Accidental Teleportation

A Anthony

[VIEW IN BROWSER](#)

updated 29. 1. 2024 | published 29. 1. 2024

## Summary

This model can be used as a bookend, but is mostly just a silly play on accidentally triggering the teleport in an RPG.



6.81 hrs



1 pcs



0.20 mm



0.40 mm



PLA



108 g



Prusa XL

[Art & Design](#) > [Other Art & Designs](#)

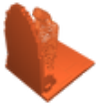
Tags: [rpg](#) [bookend](#) [teleport](#) [teleportation](#)

This model is a play on that one character that is always accidentally triggering stuff on the quest.

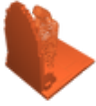
I printed this on the Prusa XL using **organic supports** and **PLA(galaxy black and Hatchbox blue)**, but the design was set up to use a lot less support than I added to make sure the print finished without issues.

I used Alibre to design the portal and Meshmixer(free) to design the Voronoi adventurer. If anyone wants to augment anything(or make the matching exit portal) let me know and I can also upload specific pre-patterned .stl files for use with any mesh tools.

## Model files



**accidental-teleport-bookend-2-color-xl.3mf**



**accidental-teleport-bookend-1-color-mk3.3mf**



**noob1.stl**



**portalbookshelf.stl**

## Print files



**accidental-teleport-bookend-2-color-xl\_04n\_02mm\_pla... .bgcode**

PLA 0.40 mm 0.20 mm 6.81 hrs 108 g Prusa XL

## License ©

This work is licensed under a  
[Creative Commons \(4.0 International License\)](#)



**Attribution-NonCommercial**

- ✗ | Sharing without ATTRIBUTION
- ✓ | Remix Culture allowed
- ✗ | Commercial Use

- ✖ | Free Cultural Works
- ✖ | Meets Open Definition