

Base for Screw Fixing

 **Stefano Barilli**

[VIEW IN BROWSER](#)

updated 28. 1. 2024 | published 28. 1. 2024

Summary

Screw Fixing Base for Flexible Arm.

[Gadgets](#) > [Other Gadgets](#)

Tags: [wall](#) [desktop](#) [arm](#) [gadget](#) [base](#) [screw](#)

The base is Made for vertical and horizontal positioning of the arm

I recommend to print in a high infill (at least 40%).

I made it with PLA+ 60% infilo and with an arm extended 40 cm (16 inches for American friends) and it can easily support 2kg at the end of the arm without any scratching.

For a better friction i use rubber gaskets between every joint, no knurls

It has a low tolerance due to the fact that has to be really really tight in place.

By the way my 3d printer is very old and I have an increased flow (lightly), I had to sand (not more than 5 minutes in total) to make them perfectly fit.

I used diameter 4mm screws to fix it to the desktop. It is made for 4 screws but I used only 2 because it's more than enough for me.

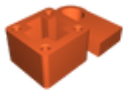
This remix is based on



Flexible & sturdy phone arm (100% Printed)

by FunkyArt

Model files



basescrew.stl

☐ At least 40% infill

License

This work is licensed under a
Creative Commons (4.0 International License)



Attribution-NonCommercial

-
- ✗ | Sharing without ATTRIBUTION
 - ✓ | Remix Culture allowed
 - ✗ | Commercial Use
 - ✗ | Free Cultural Works
 - ✗ | Meets Open Definition