

Joby Beamo LED Light Connector

m mcat

[VIEW IN BROWSER](#)

updated 29. 6. 2024 | published 29. 6. 2024

Summary

Replacement connector for Joby Beamo LED lights.

[Gadgets](#) > [Photo & Video](#)

Tags: [light](#) [led](#) [replacement](#) [connector](#) [joby](#) [beamo](#)

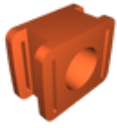
This is a replacement connector for the Joby Beamo LED light. These allow multiple units to be connected to each other or to a stand/mount with the appropriate size threaded post. The hole on this model is sized to accommodate a 1/4"-20 insert with a height of 0.39" (10mm). I used a shorter insert and as long as it's flush to one side you should have no issues attaching it to light stands/magic arms/etc.

Nozzle: .4

Filament: PETG

Layer Height : .1

Model files



joby-beam-connector_25x20.stl

License ©

This work is licensed under a
[Creative Commons \(International License\)](#)



Public Domain

-
- ✓ | Sharing without ATTRIBUTION
 - ✓ | Remix Culture allowed
 - ✓ | Commercial Use
 - ✓ | Free Cultural Works
 - ✓ | Meets Open Definition