



# Sovol SV06 Plus extruder mounted cable support



bulbasaur0

[VIEW IN BROWSER](#)

updated 29. 1. 2024 | published 29. 1. 2024

## Summary

Extruder mounted cable support for the Sovol SV06 and SV06 Plus

[3D Printers](#) > [Other Printer Parts & Upgrades](#)

Tags: [extrudermount](#) [sovol](#) [extrudercable](#) [sv06](#) [sv06plus](#)

 [VIEW CODE ON GITHUB](#)

Keep your Sovol SV06 or SV06 Plus extruder cable elevated with this cable support!

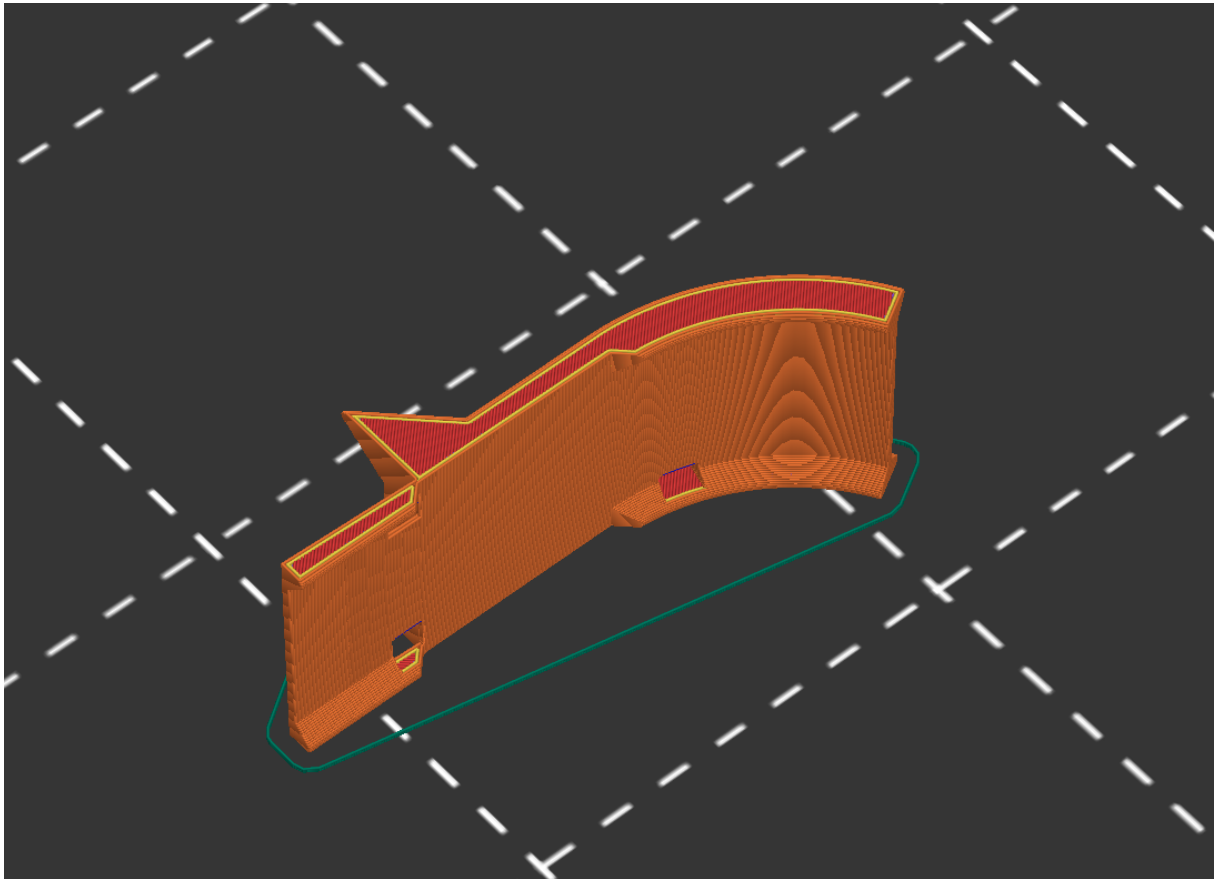
This model was created in [OpenSCAD](#). The default curve angle of 60° is customizable in the OpenSCAD model.

## Recommended pairing

This model pairs well with [my mainboard box-mounted extruder cable support \(remix\)](#).

## Printing

This prints on its side. A brim may be useful for bed adhesion.



## Installation

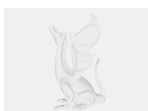
Remove the extruder cable from the clips on top of the extruder housing. Slide the support onto the clips, and then reinstall the extruder cable into the clips on top of the support. Fasten the cable to the support at the curve with a zip tie.

## Model files



### **extruder-cable-support.stl**

☐ Model for printing



### **extruder-cable-support.scad**

☐ OpenSCAD source model

# License

This work is licensed under a  
**Creative Commons (4.0 International License)**



**Attribution-ShareAlike**

---

- ✗ | Sharing without ATTRIBUTION
- ✓ | Remix Culture allowed
- ✓ | Commercial Use
- ✓ | Free Cultural Works
- ✓ | Meets Open Definition