



## Fysetc E4 Onstep case



ScottyDuzn'tKno

[VIEW IN BROWSER](#)

updated 29. 1. 2024 | published 29. 1. 2024

## Summary

Case for a Fysetc E4 Onstep telescope controller. I only need 2 motors, but include the model so you can add up to 4

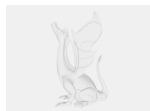
[Learning](#) > [Physics & Astronomy](#)

Tags: [fysetc](#) [onstep](#) [e4](#) [onstepx](#)

Case for a Fysetc E4 Onstep telescope controller. I only need 2 motors, but include the model so you can add up to 4

I printed using a 0.5mm nozzle, 0.3mm layer height using PLA+. I recommend no infill on walls and 3-4 layers top & bottom.

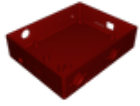
## Model files



**fysetc-e4-box.f3d**



**lid.3mf**



**box\_base.3mf**



**bracket\_r.3mf**



**bracket\_l.3mf**

## License

This work is licensed under a  
[Creative Commons \(4.0 International License\)](https://creativecommons.org/licenses/by/4.0/)



### **Attribution**

- ✗ | Sharing without ATTRIBUTION
- ✓ | Remix Culture allowed
- ✓ | Commercial Use
- ✓ | Free Cultural Works
- ✓ | Meets Open Definition