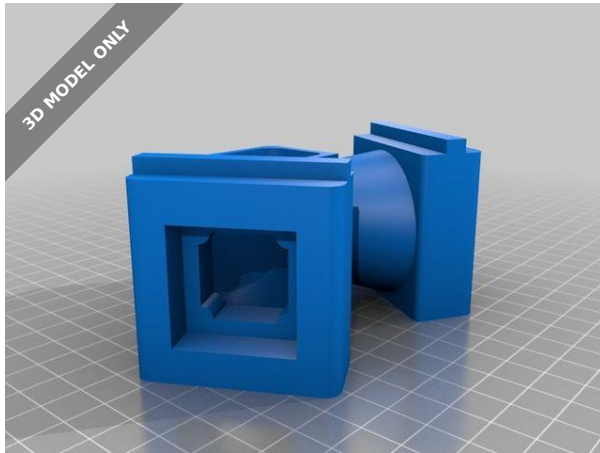


3D MODEL ONLY



Delta 2020 Motor Cooling Stands

 **d_funk_5000**[VIEW IN BROWSER](#)

updated 30. 1. 2024 | published 30. 1. 2024

Summary

I made this to elevate my folgertech 2020 delta printer and at the same time to run 30mm fans to blow directly under...

[3D Printers](#) > [Accessories](#)

Tags: [cooling](#) [2020](#) [kossel](#) [thingiverse](#) [2020extrusion](#)
[folgertech](#)

I made this to elevate my folgertech 2020 delta printer and at the same time to run 30mm fans to blow directly under the motors. Still a work in progress - I would like to add a channel for the power cord and a socket for a separate power supply.

Category: 3D Printer Accessories

Model files

**2020_cooling_stand_r2.stl**

License ©

This work is licensed under a
Creative Commons (4.0 International License)



Attribution-NonCommercial

- ✗ | Sharing without ATTRIBUTION
- ✓ | Remix Culture allowed
- ✗ | Commercial Use
- ✗ | Free Cultural Works
- ✗ | Meets Open Definition