

## Stream Deck / Macro Pad / Recording Keycaps - Backlit Compatible (KeyV2)



TamiyaGuy

[VIEW IN BROWSER](#)

updated 29. 1. 2024 | published 29. 1. 2024

## Summary

Several backlit-compatible keycaps for recording, streaming, and launching applications, designed for OEM profile keys

[Gadgets](#) > [Computers](#)

Tags: [gaming](#) [recording](#) [keycap](#) [keyboard](#) [mx](#) [cherry](#)  
[streamdeck](#)

## Features

- A collection of backlit (or multi-colour) compatible keycaps for various recording/streaming/application-launching purposes, designed to be used with a macropad or stream deck. Based off [rsheldiii's KeyV2 library](#)
  - OEM R4 profile keycaps (function row) with a Cherry MX stem
  - All keycaps\* can be printed on a standard FDM printer with a 0.4mm nozzle (but will obviously look better on a resin printer!)
- \*Note: "MicMute.stl" has a high chance of breaking when pushing the

- legend in - I recommend using "Mic.stl" instead
- Keycap and legend fits together via friction - no glue needed

## Print Guidelines

- **Layer height:** 0.1mm  
**Supports:** Yes, tree supports for the keycaps  
**Infill:** 100%  
**Slicing Tolerance:** Exclusive
- You will need to rotate the legends by 2.5° to lay them flat in your slicer (or use the 'Align face to build plate' option in Cura)

## Post-printing

- Remove the supports from the keycaps and cut away the eight support structures at the bottom
- Press the legend into the keycap - it should be a very tight friction fit and might need pressing in with the handle of a screwdriver or similar object. Rest the keycap flat on a table to make sure that the stem doesn't break off

Why not try printing the keycap in transparent filament, then changing to opaque at 5.9mm to give a pudding keycap effect? Or print it however you want, I'm not your mum. Enjoy!

## This remix is based on



**KeyV2: Parametric Mechanical Keycap Library**  
by rsheldiii

## Model files



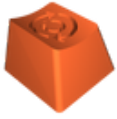
Keycaps

13 files



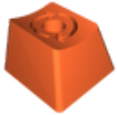
**aftereffects.stl**

---



**instreplayonoff.stl**

---



**instreplaysave.stl**

---



**mic.stl**

---



**micmute.stl**

---



**photoshop.stl**

---



**premiere.stl**

---



**record.stl**

---



**screenshot.stl**

---



**stop.stl**

---



**twitch.stl**



**vegas.stl**



**webcam.stl**



**Legends**

13 files



**aftereffects\_legend.stl**



**instreplayonoff\_legend.stl**



**instreplaysave\_legend.stl**



**mic\_legend.stl**



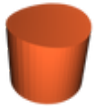
**micmute\_legend.stl**



**photoshop\_legend.stl**



**premiere\_legend.stl**



**record\_legend.stl**



**screenshot\_legend.stl**



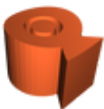
**stop\_legend.stl**



**twitch\_legend.stl**



**vegas\_legend.stl**



**webcam\_legend.stl**

## License ©

This work is licensed under a  
[Creative Commons \(4.0 International License\)](https://creativecommons.org/licenses/by-sa/4.0/)



## Attribution-ShareAlike

---

- ✗ | Sharing without ATTRIBUTION
- ✓ | Remix Culture allowed
- ✓ | Commercial Use
- ✓ | Free Cultural Works
- ✓ | Meets Open Definition