

Bambu Forever Clip

K Kevin

[VIEW IN BROWSER](#)

updated 7. 2. 2024 | published 7. 2. 2024

Summary

The LAST clip you will ever need for your Bambu spools, this permanently attaches to the holes in Bambu spools

[3D Printers](#) > [Bambu Lab Parts & Upgrades](#)

Tags: [filament](#) [clip](#) [filamentspoolholder](#) [a1](#) [bambu](#)
[bambulab](#) [x1c](#) [p1p](#) [p1s](#) [a1mini](#)

V2 has been released, I added a little “bump” internally in the filament hole that is .003" interference fit with the filament making it hold it better with slight friction. Also added a chamfer on the lower radius to help the filament not catch while feeding. Everything else is the same, leaving V1 up if anyone still wants to use it, it is a looser fit on the filament, but V2 is better in my opinion.

I understand that Amazon has run out of stock on the M4x4 screws, please be sure you are ordering the correct size, here is an alternative link to some screws that will fit from McMaster Carr, they are a little more expensive

<https://www.mcmaster.com/products/screws/socket-head-screws~/18-8-stainless-steel-socket-head-screws-11/system-of-measurement~metric/thread-size~m4/length~4-mm/>

****To use these with the AMS they must be installed on the right hand side of the spool only****

****Be sure to use Arachne wall generator due to the thin wall between the top side and the counterbore wall****

****Use only M4x4 Socket head cap screws, I will have a link down below****

****Use a ball end Allen wrench to install the screws, it allows a slight angle of the wrench so you don't need to disassemble to spool****

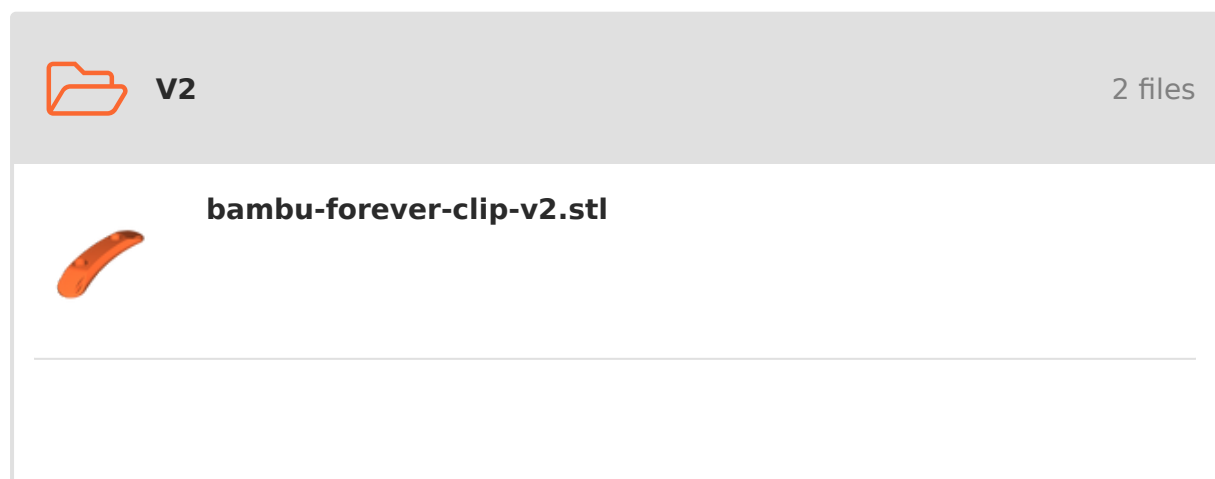
This is a complete revamp of my previous model the “No Slip Clip”, while it did work well, I had many complaints of people breaking the pegs off while trying to insert them in the spools, and it being too loose and the filament coming out, so I came up with the Bambu Forever Clip, a solid filament clip that is permanently attached to the spool with M4x4 socket head cap screws, the bolts thread perfectly into the plastic holes in the side of the spool creating their own threads. This clip still retains the feature of having a hole through it so the filament has no chance of coming out of it.

Another great feature is that you will never need to remove them as they are flush with the outside diameter of the spool so they will work inside of the AMS. I personally keep two clips installed on every spool so you have the option to have it clipped wherever the filament end is.

M4x4 Socket Head Cap Screws-

https://www.amazon.com/XunLiu-100PCS-Socket-Screws-Knurled/dp/B07CHJDQ8D/ref=sr_1_5?crid=2C03AJVHG06XG&keywords=m4x4%2Bsocket%2Bhead%2Bcap%2Bscrews&qid=

Model files





bambu-forever-clip-v2.step

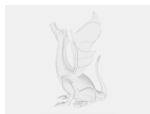


v1

2 files



bambu-forever-clip-v1.stl



bambu-forever-clip-v1.step

License



This work is licensed under a
[Creative Commons \(4.0 International License\)](https://creativecommons.org/licenses/by-sa/4.0/)

Attribution-ShareAlike

-
- ✗ | Sharing without ATTRIBUTION
 - ✓ | Remix Culture allowed
 - ✓ | Commercial Use
 - ✓ | Free Cultural Works
 - ✓ | Meets Open Definition