



Ryobi 4V screwdriver wallmount



Kolbu 3D

[VIEW IN BROWSER](#)

updated 29. 1. 2024 | published 29. 1. 2024

Summary

2 bitsholders and 4 countersunk screwholes for fastening the holder to either the wall or the table. Mine is mounted...

[Hobby & Makers](#) > [Tools](#)

Tags: [thingiverse](#)

2 bitsholders and 4 countersunk screwholes for fastening the holder to either the wall or the table. Mine is mounted on the wall.

Print Settings

Printer Brand:

Creality

Printer:

Ender 3 Pro

Rafts:

No

Supports:

No

Resolution:

,28mm

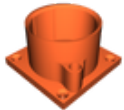
Infill:

15

Filament: 3DNET PETG White

Category: Tool Holders & Boxes

Model files



skrutrekker_stativ.stl

[Find source .stl files on Thingiverse.com](#)

License ©

This work is licensed under a
Creative Commons (4.0 International License)



Attribution-ShareAlike

-
- ✗ | Sharing without ATTRIBUTION
 - ✓ | Remix Culture allowed
 - ✓ | Commercial Use
 - ✓ | Free Cultural Works
 - ✓ | Meets Open Definition