



Clip Cable USB CAM for EnXLosure



Krys

[VIEW IN BROWSER](#)

updated 29. 1. 2024 | published 29. 1. 2024

Summary

Clip Cable USB CAM for EnXLosure You need to insert M3 Thread into the hole you want fix clip and M3x6

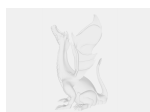
[3D Printers](#) > [Accessories](#)

Tags: [prusa](#) [cable](#) [clip](#) [esp32cam](#) [usb](#) [xl](#) [enxlosure](#)

Model files



clip-usb-cam.3mf



clip-usb-cam.f3d

License

This work is licensed under a
Creative Commons (4.0 International License)



Attribution-ShareAlike

- ✗ | Sharing without ATTRIBUTION
- ✓ | Remix Culture allowed
- ✓ | Commercial Use
- ✓ | Free Cultural Works
- ✓ | Meets Open Definition