

## Adafruit MacroPad RP2040 Snap fit case

**D** Dennis

[VIEW IN BROWSER](#)

updated 27. 12. 2022 | published 27. 12. 2022

### Summary

Snap fit case for the Adafruit MacroPad RP2040. Requires no additional hardware.

[3D Printers](#) > [Accessories](#)

Tags: [case](#) [enclosure](#) [snapfit](#) [keyboard](#) [adafruit](#)  
[openscad](#) [macropad](#)

This case for the Adafruit MacroPad is a snap fit enclosure and requires no additional hardware.

Layer height 0.2

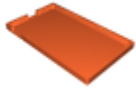
Should be sliced with “Detect Thin Walls” so the tips of the snap tabs do not make gaps in the side walls.

If you are using the Adafruit “Macropad Hotkeys” project you can place the OpenSCAD.py files in the “macros” folder of your Macropad to add OpenSCAD macro keys.

# Model files



**case\_upper\_half.stl**



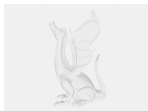
**case\_lower\_half.stl**



**macropad-case.scad**



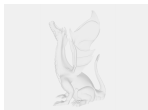
**openscad.py**



**openscad2.py**



**openscadcolor.py**



**openscadcustom.py**

## License

This work is licensed under a  
**Creative Commons (4.0 International License)**



### Attribution

- ✗ | Sharing without ATTRIBUTION
- ✓ | Remix Culture allowed
- ✓ | Commercial Use

- ✓ | Free Cultural Works
- ✓ | Meets Open Definition