

Palworld Lithophane

 **Sam Chadwick**

[VIEW IN BROWSER](#)

updated 19. 2. 2024 | published 19. 2. 2024

Summary

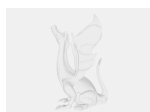
Lithophane for the palworld cover art. Happy to make some custom ones for your favouroite screenshots or pals.

[Gadgets](#) > [Video Games](#)

Tags: [lithophane](#) [pokemon](#) [palworld](#) [grizzbolt](#) [electrabuzz](#)

Lithophane created using solidworks. Can change to different sizes or different art if you want just drop me a message.
Recomend 99% Grid infill(although probably irrelevant with thickness) minimum layer height for best image Took a couple of hours to print this size.
Thanks for taking a look

Model files



palworldlitho.3mf



palworld-grizzbolt.3mf

License ©

This work is licensed under a
Creative Commons (International License)



Public Domain

- ✓ | Sharing without ATTRIBUTION
- ✓ | Remix Culture allowed
- ✓ | Commercial Use
- ✓ | Free Cultural Works
- ✓ | Meets Open Definition