



Pokemon TCG Deck Box for unsleeved cards



Muurph

[VIEW IN BROWSER](#)

updated 27. 5. 2022 | published 21. 8. 2021

Summary

This is a simple, easy to print, Pokemon Trading Card Box to store your Deck comfortable and save.



5.30 hrs



1 pcs



0.20 mm



0.40 mm



PLA



68 g



Prusa
MK3/S/S+

[Toys & Games](#) > [Board Games](#)

Tags: [box](#) [cardbox](#) [cardcase](#) [cards](#) [case](#) [pokemon](#) [tcg](#)

This Pokemon TCG Deck Case is made to store unsleeved cards. It holds a 60 cards deck in addition of a Pokemon Coin, that usually comes with the official decks.

I made some different styles of the Topcases. To print these cases in multicollor, there is no need to have a MMU.

It still contains a blank Top Case that allows you to create your own design.

Settings:

Layer height: 0.2mm

Fill density: 15%

Fill pattern: Gyroid
Bridging angle: 180

1. colorcange: Layer 3
2. colorcange: Layer 9

A Prusa-Slicer file with all settings included is also provided.

Model files



pkmn-tcg-battle-case.3mf



topcase.stl



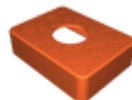
bottomcase.stl



topcase_bubbles-style.stl



topcase_y-style.stl



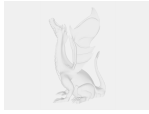
topcase_mesh-style.stl



topcase_star-style.stl



topcase.stp



bottomcase.stp

Print files



pkmn-tcg-battle-case_02mm_pla_mk3s_5h18m.gcode

PLA 0.40 mm 0.20 mm 5.30 hrs 68 g Prusa MK3/S/S+

License

This work is licensed under a
[Creative Commons \(International License\)](#)



Public Domain

- ✓ | Sharing without ATTRIBUTION
- ✓ | Remix Culture allowed
- ✓ | Commercial Use
- ✓ | Free Cultural Works
- ✓ | Meets Open Definition