



Sanlight Q1W (Dim) Mounting Bracket for Ceiling



Max Ulrich

[VIEW IN BROWSER](#)

updated 29. 1. 2024 | published 29. 1. 2024

Summary

Optical pleasing ceiling mount for the Sanlight Q1W Growlight LED Spot

[Household](#) > [Outdoor & Garden](#)

Tags: [mount](#) [bracket](#) [growbox](#) [growlight](#) [sanlight](#) [q1w](#)

I was disappointed of the Mounting of my Sanlight Q1W Growlight.

Made my own version to mount it on the ceiling to shine on my living green wall.

You need 2xBolts M4 with nuts to connect the two brackets.

2 wood screws 4,5mm to mount it on the ceiling and 2 M4 bolts to screw the printing on the lamp itself.

I used a M4 thread cutter to drive it into the little holes where the original wireclips are inserted.

fits perfectly and it is a good connection

I used PETG filament because of the higher heat resistance (Lamp will gets up to 60°C)

The extra bar is mounted on the other side of the lamp to get rid of the side-light-leaking of the spot and is also attached with 2 Bolts M4.

Model files

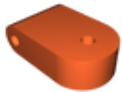
light-shieldstl.stl



connection-plate.stl



connectorstl.stl



mounting-platestl.stl



sanlightq1wceilingmount.3mf

☐ Printfile for my Bambulab A1 mini with PETG Filament

License ©

This work is licensed under a
Creative Commons (International License)



Public Domain

- ✓ | Sharing without ATTRIBUTION
- ✓ | Remix Culture allowed
- ✓ | Commercial Use
- ✓ | Free Cultural Works

✓ | Meets Open Definition