



TV stand/feet raiser for Hisense



LowinenPien

[VIEW IN BROWSER](#)

updated 5. 2. 2024 | published 5. 2. 2024

Summary

A raiser for hisense tv feets



0.50 hrs



1 pcs



0.20 mm



0.40 mm



PLA



12 g



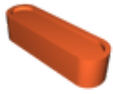
Creality
Ender 3 V3
SE

[Household](#) > [Other House Equipment](#)

Tags: [feet](#) [tv](#) [addon](#) [hisense](#) [raise](#)

A 0,79inch (2cm) high raise for hisense tv feet. The Hisense tv feet is shown in the picture and fits nice on the raise. I created the raise because my soundbar is currently to high in front of the tv and blocks the signals from the remote. So i had to raise the tv feet without using to much material and avoiding printing a whole new feet.

Model files



stunning-bombul4.stl

Print files



stunning-bombul_ender-3-v3-se_04_cr-pla_175_33m.gcode

PLA 0.40 mm 0.20 mm 0.50 hrs 12 g

License ©

This work is licensed under a
[Creative Commons \(4.0 International License\)](#)



Attribution-NonCommercial

-
- ✗ | Sharing without ATTRIBUTION
 - ✓ | Remix Culture allowed
 - ✗ | Commercial Use
 - ✗ | Free Cultural Works
 - ✗ | Meets Open Definition