



## Pokemon TCG Deck Box for sleeved cards



Muurph

[VIEW IN BROWSER](#)

updated 21. 8. 2022 | published 21. 8. 2022

### Summary

This is a simple, easy to print, Pokemon Trading Card Box to store your sleeved Deck comfortable and save.



7.56 hrs



1 pcs



0.20 mm



0.40 mm



PLA



93 g



Prusa  
MK3/S/S+

[Toys & Games](#) > [Board Games](#)

Tags: [box](#) [cardbox](#) [cardcase](#) [cards](#) [case](#) [pokemon](#) [tcg](#)

This Pokemon TCG Deck Case is made to store sleeved cards. It holds a 60 cards deck as well as a Pokemon Coin, that usually comes with the official decks.

I made some different styles of the Topcases. To print these cases in multicollor, there is no need to have a MMU.

It still contains a blank Top Case that allows you to create your own design.

Settings:

Layer height: 0.2mm

Fill density: 15%

Fill pattern: Gyroid  
Bridging angle: 180

1. colorchange: Layer 3
2. colorchange: Layer 9

A Prusa-Slicer file with all settings included is also provided

## Model files



**pkmn-tcg-battle-case-sleeved-cards-3color.3mf**



**pkmn-tcg-battle-case-sleeved-cards.3mf**



**topcase.stl**



**bottomcase.stl**



**topcase\_pokeball-style.stl**



**topcase\_flame-style.stl**



**topcase\_hexagon-style.stl**



**topcase\_bubbles-style.stl**

---



**topcase\_mesh-style.stl**

---



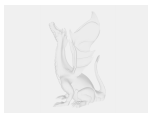
**topcase\_star-style.stl**

---



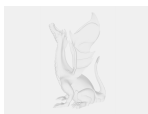
**topcase\_y-style.stl**

---



**topcase.stp**

---



**bottomcase.stp**

---

## Print files



**pkmn-tcg-battle-case-sleeved-cards-3color\_02mm\_.gcode**

⚙️ PLA ⚙️ 0.40 mm ⚙️ 0.20 mm ⌚ 7.56 hrs ⚖️ 93 g 🖨️ Prusa MK3/S/S+

## License ©

This work is licensed under a  
[Creative Commons \(International License\)](#)



## Public Domain

---

- ✓ | Sharing without ATTRIBUTION
- ✓ | Remix Culture allowed
- ✓ | Commercial Use
- ✓ | Free Cultural Works
- ✓ | Meets Open Definition