



External Fibre/ Cable Wall Entry



anp27

[VIEW IN BROWSER](#)

updated 25. 2. 2024 | published 25. 2. 2024

Summary

External Fibre/Cable Entry Wall Plug

[Household](#) > [Outdoor & Garden](#)

Tags: [wall](#) [cable](#) [it](#) [diy](#) [plug](#) [optic](#) [entry](#) [fibre](#)

I needed to create an entry plug that could be fitted around an external grade fibre bundle (fibre OD ~5.8mm) and allow it to be gently bent towards the wall. This fits a ~40mm masonry core drill to allow the bundle of pre-terminated fibre connectors to be pulled through as well.

There are two versions - a straight through (for internal side of cavity, or as needed) and a gentle bend version that allows the fibre to be bent with a drip loop to stop rainwater entering the cavity without violating the static bend radius of the fibre.

The design is split into two parts to allow for clipping over the fibre and has a couple of bendable tabs to friction fit into the hole (or can be fitted with sealant as desired). You will need to print both halves of the version you would like, plus two of the dowels to fit the design together. It's designed so that you can print with both sides flat to the bed without the need for supports. Print the dowels upright.

CAD Design uploaded so you can tweak hole sizes as needed for your application. Would work equally well for cables.

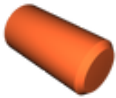
Model files



fibre-plug-1-bend.stl



fibre-plug-2-bend.stl



fibre-plug-dowel-both-versions.stl



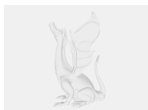
fibre-plug-1-straight.stl



fibre-plug-2-straight.stl



fibre-plug-dowel-v1.f3d



fibre-plug-straight-v4.f3d



fibre-plug-v6-bend.f3d

License ©

This work is licensed under a
[Creative Commons \(4.0 International License\)](https://creativecommons.org/licenses/by-nc/4.0/)



Attribution-NonCommercial

- ✗ | Sharing without ATTRIBUTION
- ✓ | Remix Culture allowed
- ✗ | Commercial Use
- ✗ | Free Cultural Works
- ✗ | Meets Open Definition