



Jo Presser alternate parts (M8 idler and feet)



mothdotmonster

[VIEW IN BROWSER](#)

updated 24. 2. 2024 | published 24. 2. 2024

Summary

Just some alternate parts I made for my own build

[3D Printers](#) > [Accessories](#)

Tags: [press](#) [heat](#) [set](#) [insert](#)

The design by Vector3D is very good, but I needed to make some minor tweaks to fit the spare parts I had on hand from a broken Ender 3.

The feet attach to the sides of the extrusion and can be printed on most printers, even teeny tiny ones.

The idler attaches the same as the original, but is fit for the hardware that an Ender 3's idlers use.

This remix is based on



Jo Presser - Threaded Insert Heat Press

by Adam - Vector 3D

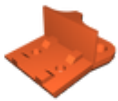
Model files



left-foot.stl



right-foot.stl



m8-idler.stl

License ©

This work is licensed under a
[Creative Commons \(4.0 International License\)](#)



Attribution

-
- ✗ | Sharing without ATTRIBUTION
 - ✓ | Remix Culture allowed
 - ✓ | Commercial Use
 - ✓ | Free Cultural Works
 - ✓ | Meets Open Definition