

WDT tool for normal pins



The Real Gareth Evans

[VIEW IN BROWSER](#)

updated 24. 2. 2024 | published 24. 2. 2024

Summary

An espresso WDT tool that uses normal dressmaking pins instead of acupuncture pins

[Household](#) > [Kitchen](#)

Tags: [espresso](#) [coffee](#) [wdt](#)

There are many WDT tools here on Printables, but they all seem to need you to buy acupuncture needles for them. Call me a skinflint, but I've got literally hundreds of glass-head dressmaking pins here, and I thought it would be better to use some of them instead.

The pin holes are pretty small, and are about right for me, but your printer might have different tolerances, so I've included the source file. Change the "pin_shaft_diameter" parameter to make the holes bigger or smaller. You'll need the BOSL2 library, from <https://github.com/BelfrySCAD/BOSL2>.

I've listed this as a remix of jkim_makes' model; I haven't used that model itself, but I copied the placement and angle of the pins from it, which saved me all the actual work, so they deserve the credit.

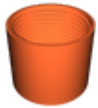
This remix is based on



9 Prong Espresso Distribution Tool WDT

by jkim_makes

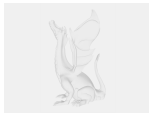
Model files



bottom.stl



top.stl



wdt-tool.scad

License ©

This work is licensed under a
Creative Commons (4.0 International License)



Attribution—Noncommercial—Share Alike

- ✗ | Sharing without ATTRIBUTION
- ✓ | Remix Culture allowed
- ✗ | Commercial Use
- ✗ | Free Cultural Works
- ✗ | Meets Open Definition