



Modular Right-Angle RGB LED Bracket for Printer Enclosure

a apalrd

[VIEW IN BROWSER](#)

updated 4. 10. 2021 | published 4. 10. 2021

Summary

This bracket is designed to hold an LED strip at a right angle, mounted on the side of a 3D printer enclosure.



1.22 hrs



1 pcs



0.30 mm



0.40 mm



PLA



23 g



Prusa
MK3/S/S+

[3D Printers](#) > [Accessories](#)

Tags: [led](#) [enclosure](#) [ws2812](#) [rgb](#)

This bracket is designed to hold an individually addressable LED strip (such as the WS2812 family) in a plastic sleeve, using printed-in clips to retain the LED strip.

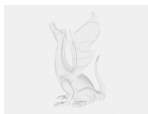
Each bracket segment is 166mm long, which is the exact length of 10 LEDs at 60 LED/m. Segments can be bolted together using #8-32 x 1/2" fasteners, and each segment has 3 bolt holes with nut pockets for #8 fasteners to mount the bracket to your enclosure. Print as many as you

need for the length of LEDs that you have. Model is symmetrical and can mount in any orientation and bolt together.

I used this as part of my OctoPrint setup to hold LED status indicators (using the [OctoPrint WS281x LED Status plugin](#)).

[Read more about the full OctoPrint + LED project on my blog.](#)

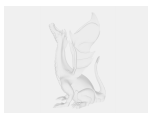
Model files



lightbracket.amf



lightbracket.3mf



lightbracket.fcstd

Print files



lightbracket_03mm_pla_mk3s_1h13m.gcode

🌀 PLA 🌀 0.40 mm ≡ 0.30 mm ⌚ 1.22 hrs ⚖️ 23 g 🖨️ Prusa MK3/S/S+

License

This work is licensed under a [Creative Commons \(4.0 International License\)](#)



Attribution-ShareAlike

- ✘ | Sharing without ATTRIBUTION
- ✓ | Remix Culture allowed
- ✓ | Commercial Use
- ✓ | Free Cultural Works
- ✓ | Meets Open Definition