

Kingroon KLP1 Magnetic fan upgrade

A Akmjoe

[VIEW IN BROWSER](#)

updated 24. 2. 2024 | published 24. 2. 2024

Summary

This upgrade moves the cooling fan to the left side and makes it easily removable for quick access to the extruder gears

[3D Printers](#) > [Other Printer Parts & Upgrades](#)

Tags: [klp1](#) [kingroonklp1](#)

One of the first problems I had with the KLP1 was the extruder control board blocking the door to the filament gears. This made it awkward to clear a jam in the extruder. The fan housing itself was also in the way.

This modification moves the extruder board to the front, and the fan to where the board was. The fan is held in place by magnets, so it can be easily removed to give full access to the extruder cover and gears.

You will need 6 round neodymium magnets (8mm x 2mm).

As with any fan duct, it should be printed in a high temperature material like ABS.

Model files



fan_mount.step



board_cover.stl



fan_duct_v2.stl



board_move.stl



k1p1_magnetic_fan.3mf



fan_mount.step



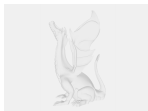
board_cover.step



board_move.step



fan_duct_v2.step



board_move.fcstd



fan_duct_v2.fcstd

License ©

This work is licensed under a
Creative Commons (International License)



Public Domain

- ✓ | Sharing without ATTRIBUTION
- ✓ | Remix Culture allowed
- ✓ | Commercial Use
- ✓ | Free Cultural Works
- ✓ | Meets Open Definition