



## Desk lamp traffic cone



elschopi

[VIEW IN BROWSER](#)

updated 24. 2. 2024 | published 24. 2. 2024

## Summary

Parts to build a desk lamp traffic cone

[Household](#) > [Home Decor](#)

Tags: [decoration](#) [lamp](#) [desk](#) [trafficcone](#)

Modeled to be used with <https://www.printables.com/de/model/542796-traffic-cone/files>

(100 mm)

All parts print without supports if laid on the correct face in slicer.

There are three variants of the LED holder:

1. single 5 mm LED (straw hat LED works great)
2. single rectangular 1W LED
3. three 5 mm LEDs (again, straw hat LEDs look very nice)

Also necessary are:

- M3 heat set inserts: 2 for the lid, 2 to 4 for the battery compartment
- I used M3 countersunk torx head screws: 2 pcs. M3x6 for the lid, 2 to 4 M3x10 to mount the LED holder to the battery compartment

- TP4056 battery charger module, I used the variant with battery protection circuit
- a rocker switch, I use [https://www.amazon.de/gp/product/B07QB22J62/ref=ppx\\_yo\\_dt\\_b\\_asin\\_title\\_o09\\_s00?ie=UTF8&psc=1](https://www.amazon.de/gp/product/B07QB22J62/ref=ppx_yo_dt_b_asin_title_o09_s00?ie=UTF8&psc=1)
- a Li-Ion battery pack of your choice
- obviously, LEDs of some sort, I like these straw hat ones: [https://www.amazon.de/gp/product/B01BUVHSSE/ref=ppx\\_yo\\_dt\\_b\\_asin\\_title\\_o02\\_s00?ie=UTF8&psc=1](https://www.amazon.de/gp/product/B01BUVHSSE/ref=ppx_yo_dt_b_asin_title_o02_s00?ie=UTF8&psc=1)
- I use a constant current source for my LEDs to get constant brightness over varying battery voltage

## Model files



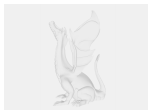
### **led\_5mm\_einzeln.step**

☐ for a single 5mm LED



### **led\_5mm\_dreifach.step**

☐ for three 5mm LEDs



### **batteriekasten.step**

☐ battery compartment



### **highpowerled.step**

☐ for a single rectangular high-power LED



### **batteriekasten\_deckel.step**

☐ battery compartment lid

## License ©

This work is licensed under a  
[Creative Commons \(4.0 International License\)](https://creativecommons.org/licenses/by-nc/4.0/)



**Attribution-NonCommercial**

- ✗ | Sharing without ATTRIBUTION
- ✓ | Remix Culture allowed
- ✗ | Commercial Use
- ✗ | Free Cultural Works
- ✗ | Meets Open Definition