

608 Bearing



drho1337

[VIEW IN BROWSER](#)

updated 24. 2. 2024 | published 24. 2. 2024

Summary

This is a 608 ball bearing. The special feature is that cal. 4,5mm steel balls are used.

[Hobby & Makers](#) > [Mechanical Parts](#)

Tags: [ball](#) [steel](#) [bearing](#) [608](#) [608bearing](#) [608zz](#)
[kugellager](#) [stahl](#)

To assemble this 608 bearing, you need the following parts:

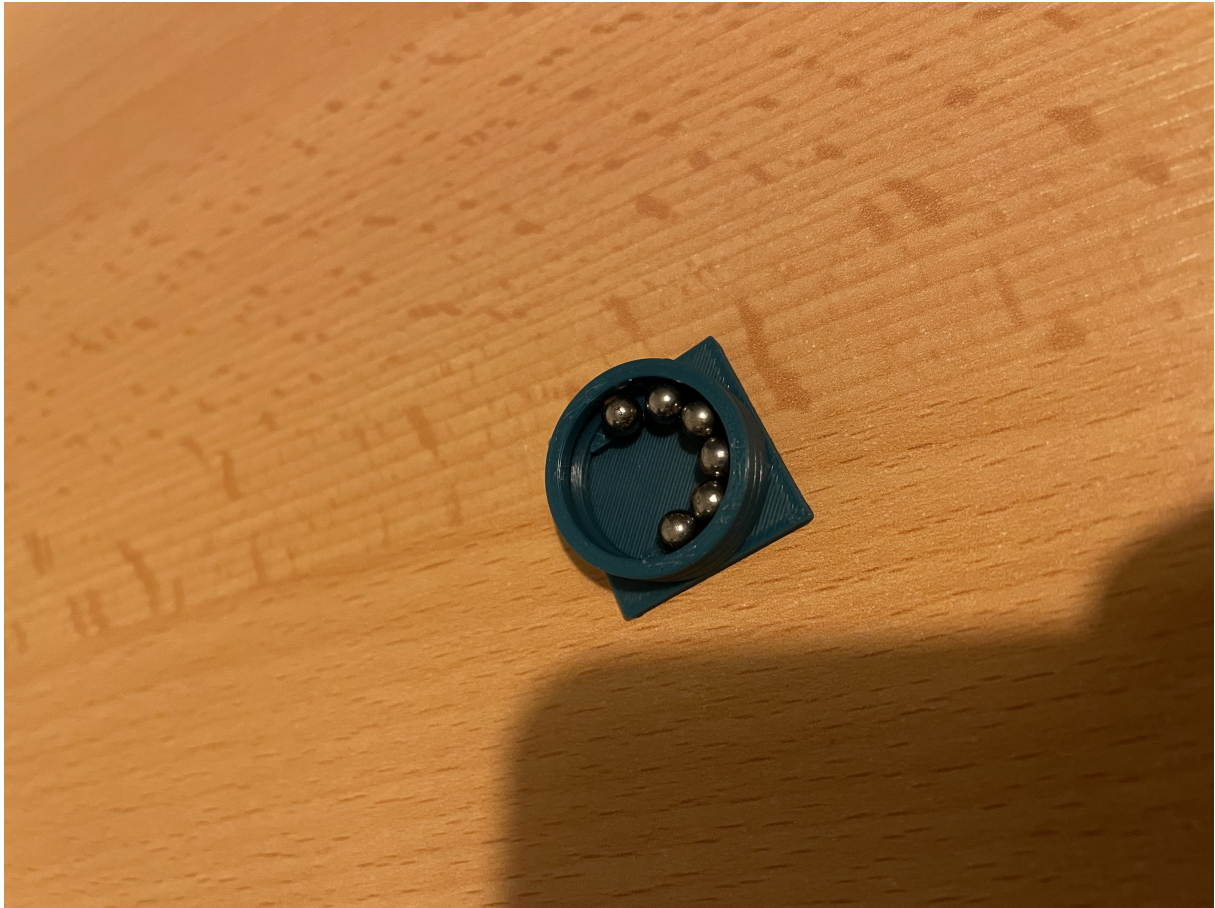
- 1x innerring
- 1x outerring
- 1x cage
- 1x assembly helper
- 6x steel balls diameter 4,5mm

For the printing settings, I recommend setting the seam position to random. This will prevent a very pronounced seam in the ball track, which would impair the roundness of the bearing.

Assembly:

Place the outer ring on the assembly helper and insert 6 steel balls. The balls should lie on the small shoulder in order to be pre-positioned in in the

center of the ball track.



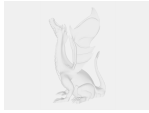
Carefully insert the inner ring without moving the balls.
The assembly helper should be held slightly in place.



The balls must be carefully distributed evenly with a small screwdriver and then the cage only needs to be clipped in. The ball bearing is successfully assembled.



Model files



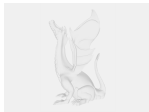
cage.stp



assembly-helper.stp



assembly.stp



outerring.stp



innerring.stp



assembly-helper.stl



outerring.stl



innerring.stl



cage.stl

License

This work is licensed under a
Creative Commons (4.0 International License)



Attribution-ShareAlike

- ✗ | Sharing without ATTRIBUTION
- ✓ | Remix Culture allowed
- ✓ | Commercial Use
- ✓ | Free Cultural Works
- ✓ | Meets Open Definition