



Lighter Wind Guard



occupied_brain

[VIEW IN BROWSER](#)

updated 7. 10. 2021 | published 7. 10. 2021

Summary

Provides basic protection from wind while lighting up smokes. Useless against super high speed wind, right hand use only

[Household](#) > [Outdoor & Garden](#)

Tags: [lighter](#) [guard](#) [protection](#) [wind](#) [lighterguard](#)

Provides basic protection from wind while lighting up smokes. Useless against super high speed wind, right hand use only.

3 Themes available :

Autobots

Cannabis / Marijuana

Flammable

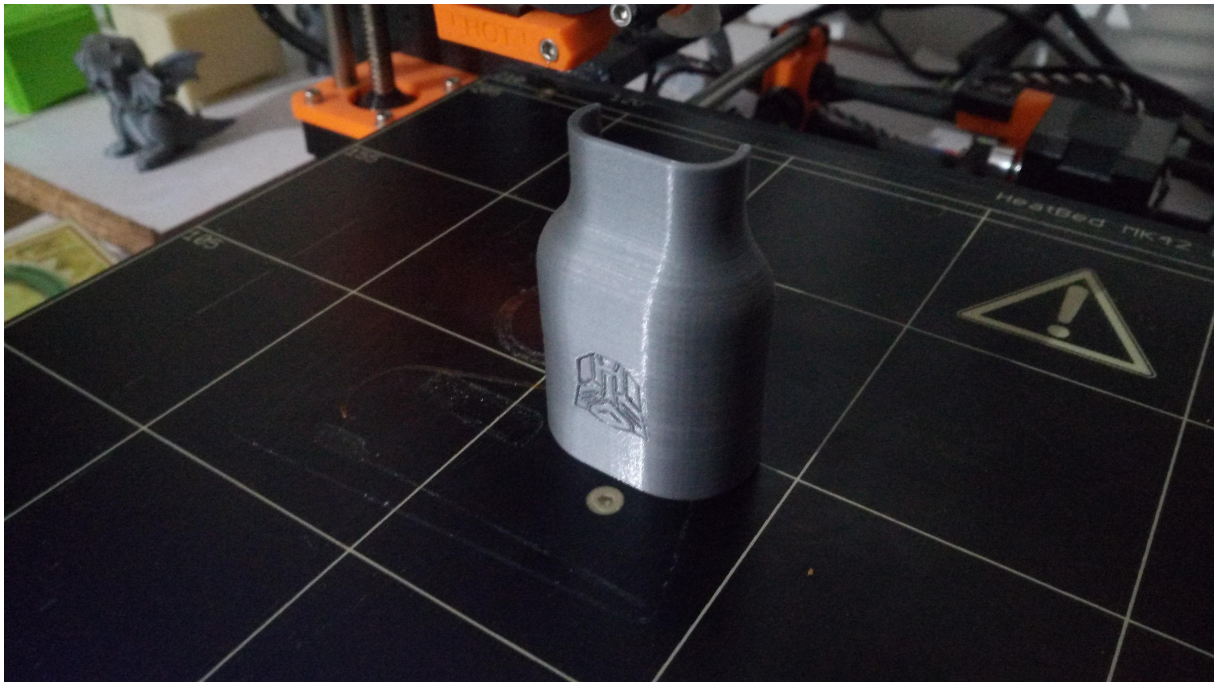
Print Settings : 150um (.15mm) or 200um (.2mm) layer height. 3 Perimeter.

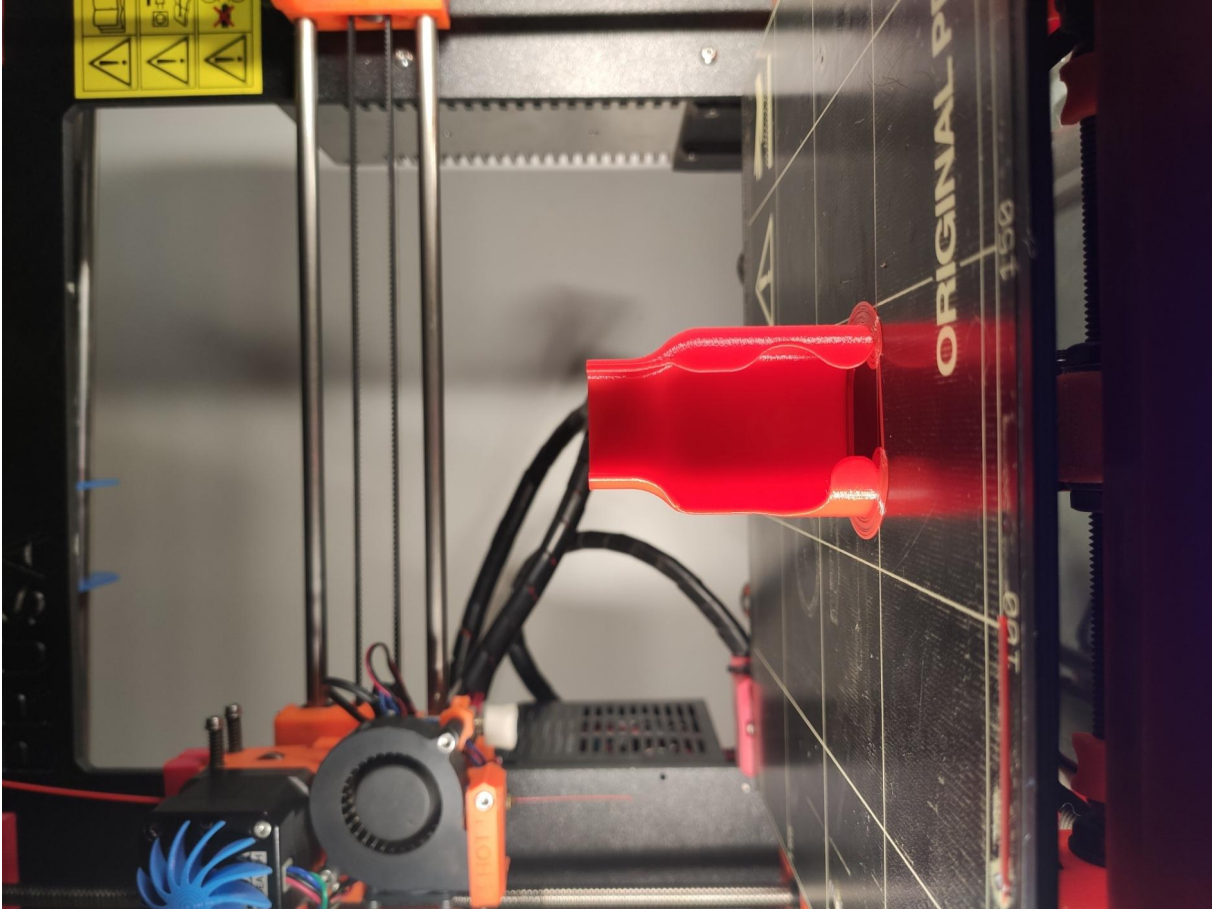
Infill amount doesn't matter as there's nothing to fill in.

Brim can help.

Time (for 1) : 1hr 10mins

Tip : Don't print these in light colors like Red, Orange, Yellow, White as they'll pass the light through the whole body and not just the intended graphic area.







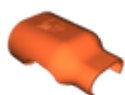








Model files



lighter-wind-gaurd-autobot.stl



lighter-wind-gaurd-flammable.stl



lighter-wind-gaurd-cannabis.stl

License

This work is licensed under a
Creative Commons (4.0 International License)



Attribution-ShareAlike

- ✗ | Sharing without ATTRIBUTION
- ✓ | Remix Culture allowed
- ✓ | Commercial Use
- ✓ | Free Cultural Works
- ✓ | Meets Open Definition