

# Keyring Pokemon Kanto

 onigidrift

[VIEW IN BROWSER](#)

updated 3. 3. 2024 | published 3. 3. 2024

## Summary

THE keyring of the map of Kanto

[Art & Design](#) > [2D Plates & Logos](#)

Tags: [pokemon](#) [nintendo](#) [videogame](#) [map](#) [keychain](#)  
[kanto](#) [keyring](#) [carte](#) [porteclefs](#)

Here is the first keyring in my series of POKEMON keyrings, I decided to start with the Kanto region, the one where it all began for me

Personally I use a Bambu with an AMS, so I can do it with the colors, but you can download it and paint it, then varnish it to be sure that the paint sticks well

I recommend printing it at 20% infill with the honeycomb pattern, and the model is intended to be printed at 0.2

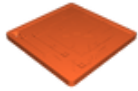
You can print it in PLA (that's what I do), but you can also print it in PETG or ASA/ABS with the same parameters

As soon as I have unlocked the second sales location, I will put the Johto region keychain on sale

Don't hesitate to leave a comment and a rating, it helps me a lot.

Thank you and have a nice day

## Model files



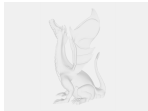
**kanto.stl**

📄 The STL file



**kanto.step**

📄 The STEP file



**kanto.3mf**

📄 the 3MF file already colored for Bambulab with AMS

## License ©

This work is licensed under a **Standard Digital File License**.

Digital files have a strict non-commercial, personal use only license.

You shall not share, sub-license, sell, rent, host, transfer, or distribute in any way the digital file or 3D printed versions of this object, nor any other derivative work of this object in its digital or physical format (including remixes of this object).

You can not host these files on other digital platforms, web stores or cloud repositories.

The objects may not be used in any way whatsoever in which you charge money, collect fees.

- 
- ✖ | No sharing or redistributing in any way of the 3D files or derivatives
  - ✖ | No remixing
  - ✖ | Non-commercial Use (only for personal use)