



Centering Spool Printed Solid Jessie Filament Rolls



Lloyd Welder

[VIEW IN BROWSER](#)

updated 24. 2. 2024 | published 24. 2. 2024

Summary

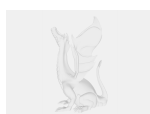
Printed Solid filament rolls have an odd shape that does not fit in my filament spool rewinder

[3D Printers](#) > [Other Printer Parts & Upgrades](#)

Tags: [rewinder](#) [filament](#) [filamentspoolholder](#)

I like the Jessie filament from Printed Solid. Unfortunately, the cardboard spools do not work in my Bambu Lab AMS, and the outside rings are too large of a diameter to easily fit. So I rewind them onto spools that do work. The spool shape does not fit any of the standard spindles for rewinders, this is an adapter to fill that purpose.

Model files



[centering-spool-printed-solid-jessie.step](#)

License ©

This work is licensed under a
Creative Commons (4.0 International License)



Attribution

- ✗ | Sharing without ATTRIBUTION
- ✓ | Remix Culture allowed
- ✓ | Commercial Use
- ✓ | Free Cultural Works
- ✓ | Meets Open Definition