



# Nintendo Switch Dock Desk Post Mount

 **Canthook**

[VIEW IN BROWSER](#)

updated 24. 2. 2024 | published 24. 2. 2024

## Summary

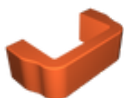
This model is a Nintendo Switch dock tray to support a switch dock on the leg of a PrimeCables standing desk leg.

[Gadgets](#) > [Video Games](#)

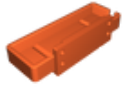
There are two models: a tray and a C-bracket to clamp the mount to a PrimeCables standing desk in order to keep it off the surface of the desk. The original switch dock fits snugly to prevent it being lifted when the Switch is removed from the dock. For that reason, a switch OLED dock likely won't fit without some modification.

The clamp mechanism uses four 1/4 inch heat-set inserts and button head cap screws to mount to the leg of the desk.

## Model files



**switch-mount-c-bracket.stl**



switch-mount-tray.stl

## License

This work is licensed under a  
[Creative Commons \(4.0 International License\)](#)



### Attribution

---

- ✗ | Sharing without ATTRIBUTION
- ✓ | Remix Culture allowed
- ✓ | Commercial Use
- ✓ | Free Cultural Works
- ✓ | Meets Open Definition