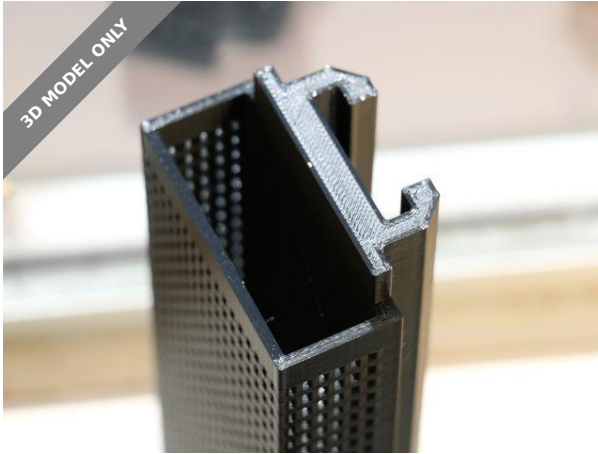


3D MODEL ONLY



Track Mounted desiccant container & lid for Prusa Enclosure

**Spikes & Spades**[VIEW IN BROWSER](#)

updated 25. 2. 2024 | published 25. 2. 2024

Summary

This model goes with attachment mounting track for Prusa enclosure. This holds desiccant beads to keep the inside dry.

[3D Printers](#) > [Prusa Parts & Upgrades](#)

Tags: [prusa](#) [enclosure](#) [dessicantholder](#) [dessiccantcontainer](#)
[enclosuremodification](#) [originalprusaenclosure](#)

This model makes use of the attachment mounting track to easily add a desiccant container to the Original Prusa Enclosure.

It is simple to fill the container with desiccant and the lid is easy to take on and off.

The holes (about 1.8 mm) are small enough to ensure that no desiccant beads will fall out (assuming you are using standard size beads 2-5mm) while also allowing for good absorption of moisture.

Biggest benefit is the large container size so you can put as much desiccant as you want and that the container is out of the way, so you are unlikely to bump it or knock it over.

Be aware that dropping the desiccant container onto the attachment mounting track while it is full of beads may cause the lid to come off and spill some of the desiccant. You should guide the container gently down until it reaches the bottom of the track to stop a spill from happening.

Print settings:

- Filament: Polymaker Polylite PETG
- 3 perimeters
- 20% Cubic Infill
- Support Material: Yes
- Slicer Presets: Prusa Mk4 (0.4mm nozzle) using 0.2mm Structural preset and generic PETG

Model files



prusa-enclosure-track-mounted-desiccant-container.3mf



prusa-enclosure-track-desiccant-container-lid.3mf



prusa-enclosure-track-mounted-desiccant-container.stl



prusa-enclosure-track-desiccant-container-lid.stl

License

This work is licensed under a
[Creative Commons \(4.0 International License\)](https://creativecommons.org/licenses/by-sa/4.0/)



Attribution-ShareAlike

- ✗ | Sharing without ATTRIBUTION
- ✓ | Remix Culture allowed
- ✓ | Commercial Use
- ✓ | Free Cultural Works
- ✓ | Meets Open Definition