



SUP air valve GoPro mount

m mehow

[VIEW IN BROWSER](#)

updated 4. 10. 2021 | published 4. 10. 2021

Summary

A GoPro mount that replaces your SUP air valve dust cap.



1.72 hrs



2 pcs



0.20 mm



0.40 mm



PLA
PET



12 g



Prusa MINI /
MINI+

[Sports & Outdoor](#) > [Outdoor Sports](#)

Tags: [gopro](#) [sup](#)

If you're looking for a way to attach a GoPro to your stand up paddle board, look no further. This mount replaces your original air valve dust cap providing a secure way to attach the camera. For extra peace of mind you can also pass through the string that was attached to the original dust cap.

Important: Your dust cap should come with a 4mm rubber gasket. You'll need to put it on the mount to get a good fit.

The mount is designed so that the camera can face the front/back of the board once the mount is screwed in. If the orientation of your valve is different, you might need to modify the attached model accordingly.

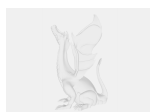
I tested it with Fanatic board but it should work with other boards as well.

While I only had a chance to print it in PLA, I'd recommend using PETG instead due to its better temperature and UV light resistance and higher tenacity.

Model files



sup-gopro-mount.3mf



sup-gopro-mount.f3d

Print files



sup_gopro_mount_02mm_petg_mini_1h43m.gcode

⚙ PET ⚙ 0.40 mm ⚙ 0.20 mm ⌚ 1.72 hrs ⚖ 12 g 🖨 Prusa MINI / MINI+



sup_gopro_mount_02mm_pla_mini_1h42m.gcode

⚙ PLA ⚙ 0.40 mm ⚙ 0.20 mm ⌚ 1.70 hrs ⚖ 11 g 🖨 Prusa MINI / MINI+

License ©

This work is licensed under a
[Creative Commons \(4.0 International License\)](#)



Attribution-NonCommercial

- ✗ | Sharing without ATTRIBUTION
- ✓ | Remix Culture allowed

- ✖ | Commercial Use
- ✖ | Free Cultural Works
- ✖ | Meets Open Definition