

## Jig for K1 Max silicon bed plate column



Jonweb

[VIEW IN BROWSER](#)

updated 24. 2. 2024 | published 24. 2. 2024

### Summary

Hello, this is a jig to cut the aftermarket silicon column for 3d printer bedplate, since for my K1 max the column...

[3D Printers](#) > [Other Printer Parts & Upgrades](#)

Tags: [tool](#) [jig](#) [thingiverse](#) [column](#) [siliconemold](#) [silicon](#)  
[columns](#) [bedplate](#) [k1max](#) [crealityk1](#) [crealityk1max](#)

Hello,

this is a jig to cut the aftermarket silicon column for 3d printer bedplate, since for my K1 max the column height measure is 12 mm and it is not easy to find e buy locally i made the jig to cut properly a 18 mm column that is typical for 3d printer.

Very easy to use put the column on Cutter Jig (I added 3 different length 10-11-12 mm), after that tighten the plug, not heavily, just to arrive to the surface and after that by manual cutter with new blade, cut it.

In addition, if you want make a column by yourself, i added a disposal mold, buy a Motorsil silicon and feed the mold, when it is dried, destroy the mold and you will have a perfect column.

Regards

Jonweb

## Print Settings

### Rafts:

No

### Supports:

No

### Resolution:

0.2

### Infill:

30%

**Filament:** Elegoo PLA Grey

Category: 3D Printer Parts

## Model files



**cutter\_jig\_11\_mm.stl**



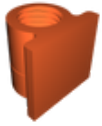
**cutter\_jig\_12mm.stl**



**column\_disposable\_jig.stl**



**cutter\_jig.stl**



**cutter\_jig\_10\_mm.stl**

---



**plug.stl**

---



**column\_disposable\_jig.stl**

[Find source .stl files on Thingiverse.com](#)

## License



This work is licensed under a  
**Creative Commons (4.0 International License)**

**Attribution—Noncommercial—Share Alike**

---

- ✗ | Sharing without ATTRIBUTION
- ✓ | Remix Culture allowed
- ✗ | Commercial Use
- ✗ | Free Cultural Works
- ✗ | Meets Open Definition