



High strength pull handle



brandon3055

[VIEW IN BROWSER](#)

updated 25. 2. 2024 | published 25. 2. 2024

Summary

Simple pull handle designed for maximum strength.

[Hobby & Makers](#) > [Mechanical Parts](#)

Tags: [handle](#)

This handle is designed to be printed in multiple pieces and glued together, I use ABS and assemble with acetone.

Under-Handle (finger area) is 80x23mm.

My print settings are:

- 3 Perimeters
- 5/4 top/bottom layers
- 0.24mm layer height
- 25% Cubic infill

Higher perimeter count will improve strength, but 3 was enough for my use case.

Model files



handle-b.3mf



handle-a.3mf



alignment-pin-a.3mf



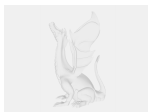
alignment-pin-b.3mf



base-a.3mf



base-b.3mf



pull-handle.step

License ©

This work is licensed under a
[Creative Commons \(4.0 International License\)](https://creativecommons.org/licenses/by/4.0/)



Attribution

- ✖ | Sharing without ATTRIBUTION
- ✔ | Remix Culture allowed
- ✔ | Commercial Use
- ✔ | Free Cultural Works
- ✔ | Meets Open Definition