



FRC breaker safety cover



Wire

[VIEW IN BROWSER](#)

updated 25. 2. 2024 | published 25. 2. 2024

Summary

FRC breaker safety cover. Covers electrical studs to prevent accidental contact.

[Hobby & Makers](#) > [RC & Robotics](#)

Tags: [frc](#) [frcrobotics](#)

This cover is for the standard 120A FRC breaker. Covers the electrical connection studs to prevent accidental contact. 3 versions included:

1. Electrical entry strait in and strait out
2. Electrical entry right angle in and strait out
3. Electrical entry right angle in and right angle out

This should cover most use cases.

Printing settings

- PETG highly recommended
- 2 perimeters
- 15% infill
- No supports

Printing orientation

- Print top of cover down (upside down)

Assembly instructions

- Easiest way to mount is to use 1/4-20 bolt from under the mounting surface and through the breaker. Use nuts and lock washers to secure the breaker to the robot. Once secure and electrical connections made install the top cover and secure in place with another pair of nuts.

Original FreeCAD files and .step exports are included.

Model files



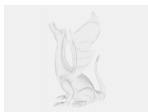
frc_breaker_cover-breaker_cover_s_s.step



frc_breaker_cover-breaker_cover_ra_ra.3mf



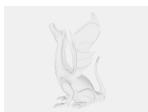
frc_breaker_cover-breaker_cover_ra_s.3mf



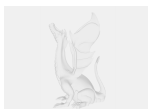
frc_breaker_cover-breaker_cover_ra_ra.step



frc_breaker_cover-breaker_cover_s_s.3mf



frc_breaker_cover-breaker_cover_ra_s.step



frc_breaker_cover.fcstd

☐ original cad file

License ©

This work is licensed under a
Creative Commons (4.0 International License)



Attribution

- ✗ | Sharing without ATTRIBUTION
- ✓ | Remix Culture allowed
- ✓ | Commercial Use
- ✓ | Free Cultural Works
- ✓ | Meets Open Definition