



Dishwasher Clip and Post Joiner



Artcfox

[VIEW IN BROWSER](#)

updated 25. 2. 2024 | published 25. 2. 2024

Summary

Need extra dishwasher clips, or a way to join two vertical "cup" posts so they move in tandem?

[Household](#) > [Kitchen](#)

Tags: [clip](#) [repair](#) [dishwasher](#) [lg](#)

For the post joiner, you'll need a couple of strong zip ties. Print in PETG so it can survive the dishwasher's hot cycle.

The post joiner will warp a bit (see attached photo), especially when it gets hot while under the load of heavy cups or bowls, but the photo shows mine after it's been through many dozens of cycles and it's still working.

If you need different spacing to match your dishwasher, I've included the OpenSDAD files that I used to generate these parts.

Recommended Print Settings:

- PETG (or anything that can withstand the high temperatures of the inside of a dishwasher, not PLA)
- Perimeters: 5 (for strength)

Print as oriented in the 3mf files.

For the Clips, just slide them over like the stock grey ones shown in the photo.

For the Post Joiner, first slide the inner piece over two posts with the groove facing down and on the same side as the rail below, then slide the retaining ring over until it snaps into place around the inner piece. Then use two zip ties to secure both in place around the metal rod below.

Model files



dishwasher_clip_x4.3mf



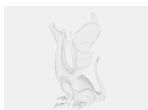
post_joiner.3mf



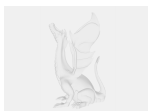
dishwasher_clip.stl



post_joiner.stl



dishwasher_clip.scad



post_joiner.scad

License

This work is licensed under a
[Creative Commons \(4.0 International License\)](https://creativecommons.org/licenses/by-sa/4.0/)



Attribution-ShareAlike

- ✗ | Sharing without ATTRIBUTION
- ✓ | Remix Culture allowed
- ✓ | Commercial Use
- ✓ | Free Cultural Works
- ✓ | Meets Open Definition