



## ANAK Meeple Box



Ellie\_Valkyrie

[VIEW IN BROWSER](#)

updated 25. 2. 2024 | published 25. 2. 2024

### Summary

Inspired by DutchMogul's Meepleverse, I decided it was time I made a terrain piece that can double as a box to hold...

[Toys & Games](#) > [Other Toys & Games](#)

Tags: [terrain](#) [rpg](#) [thingiverse](#) [meeple](#) [meeples](#) [flatminis](#)  
[anak](#) [drakkhen](#) [meepleverse](#)

Inspired by DutchMogul's Meepleverse, I decided it was time I made a terrain piece that can double as a box to hold the horde of fantasy meeples I'll be releasing as soon as I can print them and get them photographed (in the coming weeks.)

When I was a kid, I used to play this janky old SNES isometric openworld RPG called DRAKKHEN. Oh man, me my best friend (now, sadly passed in 2018) played Drakkhen for hours and hours and learned that game inside out. Even with all the translation errors in the game, the crazy learning curve and all the bad reviews it's gotten online, it's still one of my favorite games and definitely holds a place in my heart.

I have no idea what "ANAK" means, but it's the name of these temple structures where you could get free healing from a cleric in the game. Long story short, this box is a tribute to DRAKKHEN and to my departed buddy, may he rest in peace.

I've also included four fantasy hero meeples to reflect four of the hero types you could build to make your team in Drakkhen.

I printed these on rafts, with supports on the ANAK temple box/building. You can probably print them without a raft if you've got your settings dialed in real precisely. These miniatures are sized for Meepleverse and for the latest version of Pocket Tactics. They're sized at 4mm thickness (old version of Meepleverse) so when you print, if you're using the new standard, you'll want to increase the mm height by one on the Z-axis in your slicing program to make everything the same.

Category: Toy & Game Accessories

## Model files



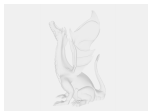
**large\_display\_anak\_box\_780197.stl**

---



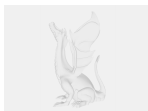
**large\_display\_elven\_archer\_780197.stl**

---



**large\_display\_baldy\_necromancer\_780197.stl**

---



**large\_display\_sir\_hammerhowse\_780197.stl**

---



**anak\_box.stl**

---



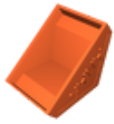
**sir\_hammerhowse.stl**

---



**femme\_cape\_axe\_shield\_long\_hair.stl**

---



**anak\_lid.stl**

---



**baldy\_necromancer.stl**

---



**elven\_archer.stl**

[Find source .stl files on Thingiverse.com](#)

## License ©



This work is licensed under a  
**Creative Commons (4.0 International License)**

**Attribution—Noncommercial—Share Alike**

---

- ✗ | Sharing without ATTRIBUTION
- ✓ | Remix Culture allowed
- ✗ | Commercial Use
- ✗ | Free Cultural Works
- ✗ | Meets Open Definition