



The Fane of Bones



Ellie_Valkyrie

[VIEW IN BROWSER](#)

updated 25. 2. 2024 | published 25. 2. 2024

Summary

After making all those skeletons (and seeing some of Dutchmogul's skeleton-themed scatter terrain on the Meepleverse...

[Toys & Games](#) > [Other Toys & Games](#)

Tags: [terrain](#) [undead](#) [dungeonsanddragons](#) [thingiverse](#)
[dungeon](#) [meeple](#) [meeples](#) [dungeonsdragons](#) [skeletons](#)
[flatminis](#) [meepleverse](#)

After making all those skeletons (and seeing some of Dutchmogul's skeleton-themed scatter terrain on the Meepleverse Kickstarter) I decided I needed a properly terrifying dungeon for the undead to lurk in.

Welcome to the Fane of Bones. With each step, the floor cracks like dead twigs beneath your feet. The walls leer at you with death's own grin multiplied a thousand times. Every inch of everything seems built from the dusty bones of the undead, and all of it can come alive at any moment. The undead seem to fold out of the walls themselves! Are you a brave enough hero to challenge the Fane of Bones?

This miniature terrain is sized for Meepleverse and for the latest version of Pocket Tactics. The meeple miniatures featured in the pictures are mostly my designs (see my Meeples collection on my profile) but I also added in

the archer and footman meeples from Meepleverse for the photos. You can print the floor pieces vertically or horizontally, and both ways has its advantages. I find that printing vertically uses less filament and prints quicker, but it's also more prone to failure and absolutely requires a raft. I printed all the pieces without supports, and the only piece I had any issue with was the altar, but it may have been because I printed it at 150% and my printer is a little janky. If I had the altar to print over, I'd print it upside down for best results. All of these prints were done on my Ender 3.

Category: Toy & Game Accessories

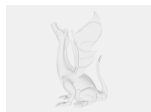
Model files



large_display_fane_of_bones_wall_1_780215.stl



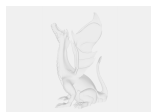
large_display_fane_of_bones_wall_2_780215.stl



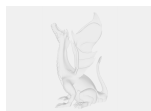
large_display_fane_of_bones_4_tile_780215.stl



large_display_fane_of_bones_single_tile_780215.stl



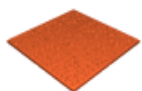
large_display_skull_chest_780215.stl



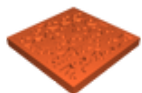
large_display_fane_of_bones_curved_single_tile_7802... .stl



skull_portal.stl



fane_of_bones_9_tile.stl



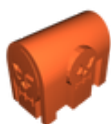
fane_of_bones_single_tile.stl



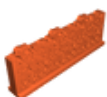
fane_of_bones_wall_1.stl



skull_gate.stl



skull_chest.stl



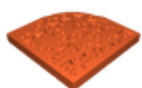
fane_of_bones_wall_3.stl



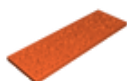
fane_of_bones_wall_corner.stl



skullpile.stl



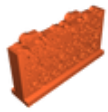
fane_of_bones_curved_single_tile.stl



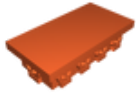
fane_of_bones_3_tile.stl



fane_of_bones_4_tile.stl



fane_of_bones_wall_2.stl



skull_altar_table.stl



fane_of_bones_corner_with_floor.stl

[Find source .stl files on Thingiverse.com](#)

License ©



This work is licensed under a
Creative Commons (4.0 International License)

Attribution—Noncommercial—Share Alike

- ✗ | Sharing without ATTRIBUTION
- ✓ | Remix Culture allowed
- ✗ | Commercial Use
- ✗ | Free Cultural Works
- ✗ | Meets Open Definition