

4-way distributor dust collection for CAMLOCK



Yupapa

[VIEW IN BROWSER](#)

updated 28. 2. 2024 | published 28. 2. 2024

Summary

Make it fit camlock system

[Hobby & Makers](#) > [Tools](#)

Tags: [woodworking](#) [dust](#) [dustcollection](#)

I am not good at editing stl file, so I redraw it by fusion360.
This distributor fits camlock, because my dust collection all using CAMLOCK system.

You may need 3mmx40mm support pins to contact two parts, mid body part can be added many as you like. Also 8 Hot insert nuts needed for right and left side cover.

I printed mine using ABS, all parts fitness designed for ABS.

This remix is based on



SHOPVAC (50mm) CAMLOCK CONNECTORS WITH MAGNETIC CATCH

by Peter H

Thingiverse

- Digital **Thingiverse - Digital Designs for Physical Objects**

Designs

for

Physical

Objects

Model files



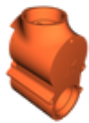
mid-body.stl



left-body.stl



left-cover.stl



right-body.stl



right-cover.stl



adapter-in.stl



adapter-out.stl



switch-a.stl



switch-b.stl



switch-c.stl



switch-d.stl



right-cover-v2.stl

License ©

This work is licensed under a
Creative Commons (4.0 International License)



Attribution—Noncommercial—Share Alike

- ✗ | Sharing without ATTRIBUTION
- ✓ | Remix Culture allowed
- ✗ | Commercial Use
- ✗ | Free Cultural Works
- ✗ | Meets Open Definition

