



Marvel Spiderman - HueForge



LucyPrint

[VIEW IN BROWSER](#)

updated 25. 2. 2024 | published 25. 2. 2024

Summary

HueForge Image

[Art & Design](#) > [2D Plates & Logos](#)

Tags: [marvel](#) [spiderman](#) [hueforge](#)

Marvel Captain America - HueForge

Please note colour, setting of individual height.

Easel for HueForge Pictures

<https://www.printables.com/de/model/778277-easel-for-hueforge-pictures>

Setting:

Print at 100% infill with a layer height of 0.08mm with a base layer of 0.16mm

Filaments Used:

PLA Generic Black Transmission Distance: 0.3

PLA Generic Gray Transmission Distance: 3

PLA Generic Beige Transmission Distance: 8

PLA Generic White Transmission Distance: 6

!!!! It appears you have mixed filament types. Be certain this is what you want. !!!!!

Swap Instructions:

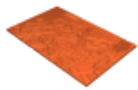
Start with Black

At layer #10 (0.88mm) swap to Gray

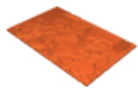
At layer #19 (1.6mm) swap to Beige

At layer #20 (1.68mm) swap to White for the rest.

Model files

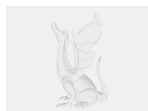


spiderman_front_75x116.stl



spiderman_front_100x155.stl

Other files



spiderman_describe.txt

License ©

This work is licensed under a **Standard Digital File License**.

Digital files have a strict non-commercial, personal use only license.

You shall not share, sub-license, sell, rent, host, transfer, or distribute in any way the digital file or 3D printed versions of this object, nor any other derivative work of this object in its digital or physical format (including remixes of this object).

You can not host these files on other digital platforms, web stores or cloud repositories.

The objects may not be used in any way whatsoever in which you charge money, collect fees.

- ✖ | No sharing or redistributing in any way of the 3D files or derivatives
- ✖ | No remixing
- ✖ | Non-commercial Use (only for personal use)