



# Eibos Easdry PTFE to PC4-M10 Connector



igalarzab

[VIEW IN BROWSER](#)

updated 25. 2. 2024 | published 25. 2. 2024

## Summary

This is a straightforward design that enables the connection of a PTFE tube via a PC4-M10 connector to the Eibos Easdry

[3D Printers](#) > [Accessories](#)

Tags: [ptfe](#) [pc4m10](#) [eibos](#) [easdry](#)

## Description

Please, don't forget to like!

This is a straightforward design that enables the connection of a PTFE tube via a PC4-M10 connector to the Eibos Easdry and may also fit other dryers with identical openings (let me know if it works on other models too please). It doesn't require any supports when printed.

There are two available versions for printing, depending on if you want to install the adaptor through the existing rubber band of the dryer, or you want to replace it completely:

- PLA/PETG: This smaller version can be installed by inserting the thinner section through the dryer's existing rubber band (refer to the images for clarification, the yellow one is PLA).

- PTU: This larger version, not compatible with PLA/PETG materials, requires the removal of the existing rubber band for installation (refer to the images for clarification, the black one is PTU).

## Assembly Instructions

1. Attach the PC4-M10 fitting to the larger, threaded end of the model.
2. Only for the PLA/PETG version: Remove the rubber band from the Eibos Easdry where you intend to install this part (there are 3 possible ports in the dryer).
3. Insert the adapter in the selected port (back, top or front).
4. Place the PTFE tube on the outer side and insert the filament from the inside.

## Components Needed

- PTFE Tube
- PC4-M10 connector

## Model files



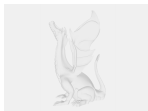
**tpu.stl**

TPU



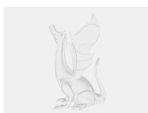
**plapetg.stl**

PLA/PETG



**plapetg.3mf**

PLA/PETG



**tpu.3mf**

TPU

# License

This work is licensed under a  
**Creative Commons (4.0 International License)**



**Attribution—Noncommercial—Share Alike**

---

- ✗ | Sharing without ATTRIBUTION
- ✓ | Remix Culture allowed
- ✗ | Commercial Use
- ✗ | Free Cultural Works
- ✗ | Meets Open Definition