



Samsung T1 - SSD mount for ASI Air Pro

M Matt

[VIEW IN BROWSER](#)

updated 15. 3. 2024 | published 15. 3. 2024

Summary

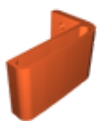
Samsung T1 mount for ZWO ASI Air Pro

[Gadgets](#) > [Photo & Video](#)

Tags: [zwo](#) [asiar](#) [samsungssd](#)

This model was designed with OnShape.
Bracket to hold a Samsung T1 (1Tb SSD) to the side of a ZWO ASI Air Pro
Printed with TPU
Sliced in PrusaSlicer at
0.2mm layer height, 0.4mm nozzle
15% cubic infill

Model files



[samsungt1-tpu-sleeve.stl](#)

License ©

This work is licensed under a
Creative Commons (4.0 International License)



Attribution-NonCommercial

- ✗ | Sharing without ATTRIBUTION
- ✓ | Remix Culture allowed
- ✗ | Commercial Use
- ✗ | Free Cultural Works
- ✗ | Meets Open Definition