



Hills Retractable Clothesline Tension Handle



Stephen J

[VIEW IN BROWSER](#)

updated 25. 2. 2024 | published 25. 2. 2024

Summary

Replacement for an impossible-to-find tensioning handle for a Hills Retractable Clothesline



2.24 hrs



1 pcs



0.15 mm



0.40 mm



PLA



46 g



Prusa XL

[Household](#) > [Outdoor & Garden](#)

Tags: [replacementpart](#) [clothesline](#) [clotheslinetensor](#) [hillshoist](#)
[hills](#) [retractableclothesline](#)

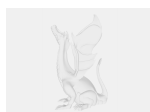
The tensioning handle on my Hills Retractable Clothesline failed after a few years of use. Whilst spare parts are available for just about every other part of the clotheslines, I could not find a replacement tensioning handle for love nor money!

I measured up the failed part and essentially re-created it in Onshape (with bit of poetic license thrown in). After a couple of iterations I had a replacement part that fit well and works splendidly.

I'd suggest printing it in PETG (at least) as it'll be subject to the outdoor environment for a very long time. I didn't have any ASA on me - but that may be another option..

I printed it in 'Fire Engine Red' because I want my repair to be noticed. This little part has prevented the scrapping and replacement of an otherwise perfectly good clothesline..

Model files



tensioner_handle.step



tensioner_handle.3mf



tensioner_handle.stl

Print files



tensioner_handle_04n_015mm_petg_xlis_2h14m.bgcode

🌀 PLA 🌀 0.40 mm ≡ 0.15 mm ⌚ 2.24 hrs ⚖️ 46 g 🖨️ Prusa XL

License ©

This work is licensed under a
[Creative Commons \(International License\)](#)



Public Domain

- ✓ | Sharing without ATTRIBUTION
- ✓ | Remix Culture allowed
- ✓ | Commercial Use
- ✓ | Free Cultural Works
- ✓ | Meets Open Definition