

DC Jack panel mount

M Matt

[VIEW IN BROWSER](#)

updated 25. 2. 2024 | published 25. 2. 2024

Summary

An enclosure mount to recess a DC input jack

[Hobby & Makers](#) > [Electronics](#)

Tags: [dc](#) [enclosure](#) [power](#) [connector](#)

This is a mount for a DC jack.

It is used to recess the connector.

See photos.

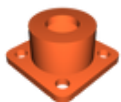
Designed with OnShape

Slice with PrusaSlicer using standard 0.2 profile

Print face down.

Some supports required

Model files



dcjack.stl

License

This work is licensed under a
Creative Commons (4.0 International License)



Attribution-NonCommercial

- ✗ | Sharing without ATTRIBUTION
- ✓ | Remix Culture allowed
- ✗ | Commercial Use
- ✗ | Free Cultural Works
- ✗ | Meets Open Definition