



Espeon Lightbox



Sitsero

[VIEW IN BROWSER](#)

updated 25. 2. 2024 | published 25. 2. 2024

Summary

Espeon Desktop Lightbox 3D File - Bask in the Radiant Aura of Pokémon's Espeon!

[Art & Design](#) > [Other Art & Designs](#)

Tags: [light](#) [lamp](#) [led](#) [multicolor](#) [pokemon](#) [cartoon](#)
[eevee](#) [eeveelution](#) [kid](#) [anime](#) [movie](#) [child](#) [evolution](#)
[lightbox](#) [bedroom](#) [bambu](#) [espeon](#) [bambulab](#) [ams](#)

Espeon Desktop Lightbox 3D File - Bask in the Radiant Aura of Pokémon's Espeon!

Embark on a journey of mystical elegance with our Espeon Desktop Lightbox 3D File - a captivating creation inspired by the ethereal charm of Espeon! This digital file presents a desktop edition, offering a mesmerizing way to infuse your study tables or bedside retreats with the radiant aura of Espeon.

Key Features:

Six Enchanting Filament Colors: Illuminate your space with a spectrum of hues! The Espeon 3D Lightbox features up to six enchanting filament

colors, capturing the mystical essence of this psychic Pokémon and creating a luminous display that radiates tranquility and elegance.

Adjustable Design for AMS Compatibility: Tailor the color palette to your needs! With the option to adjust to four colors, this lightbox is compatible with a single AMS unit, ensuring seamless printing and stunning results that faithfully capture the enchanting palette of Espeon.

LED Strip Compatibility: Enhance the radiant glow with optional LED lighting. Thoughtfully designed for LED strip integration, this lightbox elevates the mystical allure of Espeon's design with a gentle luminosity that bathes your space in tranquility.

Desktop Edition: Crafted for versatility, the desktop edition is ideal for study tables or bedside retreats, offering a convenient way to infuse your personal space with the serene beauty of Espeon.

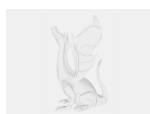
Specifications:

- **Material:** PLA or any material with decent opacity (PLA recommended)
- **Filament Colors:** Up to six enchanting colors (adjustable to four for one AMS unit)
- **LED Strip Compatibility:** Designed for optional LED strip
- **Mounting:** Desktop edition, perfect for study tables or bedside retreats

Bask in the Radiant Aura of Espeon:

Immerse yourself in the mystical elegance of Espeon with the Espeon Desktop Lightbox 3D File. With its enchanting filament colors, adjustable design for AMS compatibility, and desktop-friendly edition, this lightbox promises to envelop your personal space in a radiant aura of tranquility and elegance. Share the enchantment, like, and rate the model to spread the Pokémon magic! Gift the mystical charm of Espeon and experience the serene beauty that captivates hearts and minds alike!

Model files



espeon-lightbox.3mf



espeon-lightbox-purple.stl



espeon-lightbox-blue.stl



espeon-lightbox-white.stl



espeon-lightbox-red.stl



espeon-lightbox-pink.stl



espeon-lightbox-black.stl



espeon-lightbox-back-plug.stl

License

This work is licensed under a
[Creative Commons \(4.0 International License\)](https://creativecommons.org/licenses/by-nc-sa/4.0/)



Attribution—Noncommercial—Share Alike

✗ | Sharing without ATTRIBUTION

- ✓ | Remix Culture allowed
- ✗ | Commercial Use
- ✗ | Free Cultural Works
- ✗ | Meets Open Definition