

Universal Filament Spool

 Lookahead

[VIEW IN BROWSER](#)

updated 12. 4. 2022 | published 5. 10. 2021

Summary

Requires printer bed size at least 180x180mm. Changes: slightly bigger nut hole clearance little guides on the bar...

[3D Printers](#) > [Accessories](#)

Tags: [spool](#) [filamentpool](#) [universalspool](#)

Requires printer bed size at least 180x180mm.

BOM:

- 2 x "Side"
- 4 x "Bar"
- 1 x "Clip"
- 8 x screws M6x20
- 8 x nuts M6

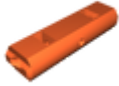
The "bar" has a hole for the filament end.

STEP files are also attached.

Model files



side.stl



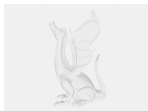
bar-60.stl



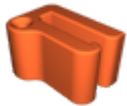
side.step



bar-60.step

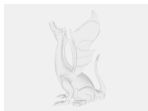


clip.step



clip.stl

Other files



sources.txt

[Find source .stl files on Thingiverse.com](https://www.thingiverse.com)

License ©

This work is licensed under a
GNU



Lesser General Public License

- ✘ | Sharing without ATTRIBUTION
- ✓ | Remix Culture allowed
- ✓ | Commercial Use
- ✓ | Meets Open Definition