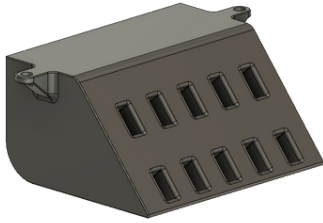


SD card holder (support 10 SD)



rc design



[VIEW IN BROWSER](#)

updated 25. 2. 2024 | published 25. 2. 2024

Summary

SD card holder



5.64 hrs



1 pcs



0.20 mm



0.40 mm



PLA



59 g



Crealty
Ender 3 S1

[Hobby & Makers](#) > [Organizers](#)

this is a sd card storage model. It is screwed to the underside of the table.

If someone make this model please post under "make"

Model files



sd-card-holder.stl

Print files



sd-card-holder_5h39m_020mm_205c_pla_ender3s1pro.gcode

PLA 0.40 mm 0.20 mm 5.64 hrs 59 g

License

This work is licensed under a
[Creative Commons \(4.0 International License\)](#)



Attribution-NonCommercial

-
- ✗ | Sharing without ATTRIBUTION
 - ✓ | Remix Culture allowed
 - ✗ | Commercial Use
 - ✗ | Free Cultural Works
 - ✗ | Meets Open Definition