



Berlebach Planet Fine Leg Leveler



Axel

[VIEW IN BROWSER](#)

updated 17. 8. 2024 | published 17. 8. 2024

Summary

A very smart :-) leveler for the legs of the Berlebach Planet. Update 08/2024: added an M8 threaded model

[Learning](#) > [Physics & Astronomy](#)

Tags: [tripod](#) [planet](#) [berlebach](#)

A very smart :-) leveler for the legs of the Berlebach Planet.

Problem finetuning the level of the Berlebach Planet?
Do not like to screw anything into the wooden tripod?

No problem. This model easily levels a weight of 30 kg mounted on top of the tripod. I'll made an M8 version, but I am still using the M6 version, which works fine.

You also need

- 20-30 cm M6/M8 stainless steel rod
- 3 M6/M8 washers
- 3 M6/M8 hex nuts

Mount it this way

1. Screw the threaded rod into the top part (all the way down). Use two M6 hex nuts screwed against each other to be able to do this and get a little help from a battery screw driver.

Then snap the top part from the inside onto the 8 mm rod (dia 7,9mm) underneath the tripod adapter.

Then

1. FIRST draw the legs out 10-15 cm!
2. Put the screw into the threaded rod
3. Put the washer into the threaded rod
4. Put the base into the threaded rod

Then you can draw the legs in. The base firmly lays onto the inside.

Printing (read carefully)

There are two kinds of printing files: STL and EMF. The EMF are for a Prusa MKS3 with the necessary parameters.

TOP part (for the 25cm threaded rod)

- Print the top part with supports only directly onto the bed
- **Has to be printed straight upward** (position it correctly!!! - see picture). You have to move it in you slicer software certain degrees to achieve this.

BASE part (for laying on the middle part of the leg)

- Print with 25% infill
- **Use a good quality material** like PLA (I use Polymaker Max PLA) or PETG or PC/ABS (if the tripod will be in the sun)

Screw wheel

- The screw wheel has a little notch. Print the part with the FLAT side down
- Use **100% infill for the inner couple of centimeters** around the hex nut

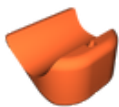
Screw helper

Also included, but not necessarily needed: a very handy helper for the in my opinion too little screw wheels for the tripod legs.

- Print this with high quality material and a good printer. Fits 100% snug.

Cheers and clear skies
Axel

Model files



planet_leveler_base_screw_through.stl



planet_leveler_top_screw_trough_m6.stl



planet_leveler_screw_for_base_screw_through.stl



berlebach_planet_screw_help.stl



pp_planet_leveler_screw_prusa_projekt.3mf



pp_planet_leveler_base_and_top_prusa_projekt.3mf

berlebach_planet_leveler-v18-m6-and-m8.f3d

License

This work is licensed under a
Creative Commons (4.0 International License)



Attribution—Noncommercial—Share Alike

- ✗ | Sharing without ATTRIBUTION
- ✓ | Remix Culture allowed
- ✗ | Commercial Use
- ✗ | Free Cultural Works
- ✗ | Meets Open Definition